

6TH - 9TH MAY 2021 | LANGLEY PARK

PERTH GARDEN & OUTDOOR LIVING FESTIVAL

PRESENTED BY

Kleenheat

YOUR
GUIDE
TO THE
2021
FESTIVAL

INTRODUCING

*Gardens
by Night*

**Kleenheat
Kitchen**

GET COOKING WITH
JENNY LAM
GUY JEFFREYS
CAROLINE TAYLOR
& VINCE GARREFFA

RECIPES ON PAGES 75 - 79

GARDEN ART

TURN AN OLD CHAIR
INTO A CHARMING
SUCCULENT PLANTER

BUSHFOOD

IN YOUR BACKYARD
with Tucker Bush

Kleenheat

HowTo. **STRATCO**

RICHGRÜ
Bring your garden to life

RAC
Home Services

City of Perth

BAILEYS

DeckingPerth

HONDA

Lighting Solutions

Beyond Bank
AUSTRALIA

nativ
by Phorms



From sustainable gardening to sustaining WA!

In these difficult times, the humble garden has become an important place in our lives. COVID-19 has taught us that activities such as tending a garden are valuable to our well-being.

The Department of Primary Industries and Regional Development (DPIRD) understands that growing a garden in a sustainable way is a journey that takes hard work, planning and commitment.

To grow our primary industries in Western Australia will also take commitment, long-term investment and collaboration as we face many challenges together - from climate change, drought, shifting weather patterns, and emerging pests or diseases to protecting our biodiversity and natural environment.

Using new technologies, DPIRD is working towards improving sustainable practices in food production because the department values agricultural and natural environments as these are important to you and your family.

You can help build a sustainable future through simple actions like buying local food, reporting signs of pests or diseases, and being water wise, which will support your local community, protect the natural environment, and food production industries.

Take a journey with us to learn what DPIRD is doing and discover how we can work together to be more sustainable. Visit the DPIRD Sustainability Precinct today!



Report your observations



MyPestGuide™ Reporter
via app or online mypestguide.agric.wa.gov.au

Pest and Disease Information Service
(08) 9368 3080 or padis@dpird.wa.gov.au

WELCOME TO THE PERTH GARDEN & OUTDOOR LIVING FESTIVAL 2021

A warm welcome to this year's Perth Garden & Outdoor Living Festival at Langley Park.

This is our 48th Festival and its journey has taken many paths; having been held at McCallum Park, Kings Park and Perry Lakes over those years.

This year, we have put our roots down at the picturesque Langley Park and I am sure you will agree, with the banks of the Swan River and stunning Perth skyline as its backdrop, it is the perfect venue for this event. To make this happen, I would like to thank the City of Perth and Perth Mayor Basil Zempliss for sponsoring this year's Festival. Bringing the gardens into the city has always been an aspiration of our industry.

With the Festival continuing to grow each year, we are delighted with its new name change to Perth Garden & Outdoor Living Festival in 2021. We feel this now encompasses everything good about gardening.

Covid-19 has changed the face of gardening and a year ago we saw many of our garden centres being stripped of plants and associate gardening products. You have all in one way or another, been touched by gardening in the last twelve months and we have also seen a new younger breed of gardeners emerging on the scene. Just like cycling, which has also seen a massive increase since last year, gardening was always accessible - it's just many of us were occupied by other leisure activities. Our job is to make gardening simple and fun. The 2021 Festival is the perfect advertisement for this.

This year, we have plenty for you to see and do and the show gardens are always the perfect place to get some inspiration for your own garden. We are



Charlie Albone
Richgro Brand Ambassador
& Host of Better Homes
and Gardens

delighted to have joined forces with the Landscape Industries Association WA members who you will be able to meet at their site located at the show gardens - you can talk to an experienced landscaper about a project you may have in mind.

As always there is plenty of greenlife for you to choose, from some of WA's leading nurseries; with plants to suit any location across WA. So whether you are looking to create a bird attracting garden, top up your greenery indoors, add plants to your verge or even try your hand at sowing seeds, we've got it all covered for you.

A key feature at the Festival is always our exciting and informative talks program over the four days. We thank our sponsors Richgro for supporting the event by bringing Charlie Albone from Better Homes & Gardens across to WA to meet you all. Full details of the talks sessions are listed in this program.

On behalf of the Nursery & Garden Industry WA and all those involved in creating this special event, we hope you enjoy your time today and go away with some terrific experiences and ideas to help make those thumbs a little greener.

Matthew Lunn
CEO NGIWA



Want a garden bursting with colour, birds, and insects? You can have a garden full of colour all year round.

Western Wildflower Gardens are the experts on maintaining and installing WA native gardens.

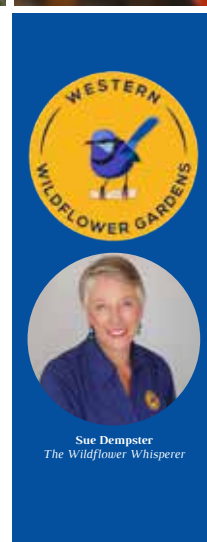
Ask for a home garden visit today.

WAKE UP TO COLOUR EVERY MORNING

Call Us:

1300 6 SEASONS

www.westernwildflowergardens.com.au
facebook.com/WesternWildflowerGardens
@westernwildflowergardens



Lakehouse Nursery
Daylily & Iris Specialists

www.lakehousenursery.com.au

WIN
with Richgro



The Ultimate Richgro Garden Pack Valued At Over \$250! 1 Pack Per Day To Be Won!

Passionate about helping Australian backyards thrive, Australian family owned Richgro has been manufacturing garden products and inspiring gardeners for more than 100 years!

Get the ultimate Richgro Garden Pack consisting of Richgro's very best fertilisers, soil wetters, potting mix and pest and weed control products to help **GROW YOU GOOD THINGS!**

ENTRY FORM

To enter, deposit this entry form at the Richgro stand in the competition box at the show OR scan this QR code.



Your chance to win the very best garden products from Richgro valued at over \$250. One entry will be drawn at 5pm each day and the winner will be notified by email.

Name: _____

Phone Number: _____

Email: _____



richgro.com.au

PERTH
GARDEN
& OUTDOOR LIVING FESTIVAL

PRESENTED BY Kleenheat

RICHGRO
Bring your garden to life

INTRODUCING HONDA'S BATTERY RANGE OF POWER EQUIPMENT

The Honda Battery Range is now available at Honda Dealerships.

Honda has introduced a new professional battery range, consisting of a Leaf Blower, Brushcutter, Hedgecutter and two Lawnmowers, offering the power and performance that comes with Honda but with the convenience, ease of use and comfort of battery. The new battery range is powered by a choice of three high-performance batteries, a 4.0Ah, 6.0Ah or 9.0Ah units from Honda's new universal battery system.

Leaf Blower - HHB36AXB

Honda's battery Leaf Blower offers powerful and robust performance with the versatility of an interchangeable flat and round nozzle provided as standard. Ease of use is assured through optimum balance to keep the nose towards the ground, while variable speed control allows the operator to work at their own pace to suit their working environments. Comfort and convenience were also a priority in the development of the new unit, with a waist belt-mounted battery to reduce weight, padded with a single-hand release and a universal fit for right or left-hand operation.

Weighing in at just 2.7kg without the battery, and with a noise level of just 99dB(A), the new Blower puts out a powerful air volume of up to 860m³ per hour, with an air speed of up to 68 metres per second.



Brushcutter – HHT36AXBEUE

The new Brushcutter ensures optimum usability with the familiar 'bike' handle system and harness for complete control. It also offers the safety and convenience of stall-free operation, with the head automatically releasing if jammed. A three-tooth blade and nylon line head are provided as standard. Weighing in at just 6.5kg without the battery, and with a noise level of just 93dB(A), it offers top-class performance with superior comfort for even the most demanding task.



Hedgecutter – HHH36AXB

Honda's new battery Hedgecutter provides a fast, precise and clean cut thanks to its 60cm Swiss-made hardened steel double-sided blades. It also offers the safety and convenience of stall-free operation, with the blade automatically releasing if jammed. Ultimate comfort and ease-of-use is assured with a 3-way adjustable rear handle, which can move 90 degrees right or left.

Weighing in at just 5kg without the battery, and with a noise level of just 101dB(A), the new Hedgecutter makes light work of anything thrown at it.



Born of IZY

Honda's new IZY-ON battery lawnmowers bring new levels of performance and quality to the battery market, both models carrying over the same qualities and build standards that live up to the name of Honda. The HRG416XB (16") and HRG466XB (18") 'IZY-ON' models deliver exceptional performance even in demanding conditions, powered by a choice of 4Ah*, 6Ah or 9Ah lithium-ion batteries. Both feature a new purpose-built brushless motor design, for optimum efficiency and to minimise noise. The 466 model also offers integrated on-off, Versamow™ selective mulching function.

Get into your local Honda dealer today or visit honda.com.au for more information!

Great gardens are in the bag.

are coming to the

PERTH GARDEN FESTIVAL

FEATURING NEW PRODUCTS



RECEIVE 10% OFF

ALL ORDERS PLACED AT OUR SITE

Find us
AT SITE 126

Made in and designed for WA gardens, Baileys range of premium potting mixes, soil conditioners, fertilisers and wetting agents are regarded by many as best in show.

Visit us at Perth Garden Festival 2021 and enjoy a range of topical demos and talks from our local gardening legends, or go in the draw to win 1 of 3 Autumn Gardening Gift Packs valued at over \$200!

W: www.baileysfertiliser.com.au

@baileysgrowgardens

DEMONSTRATIONS & TALKS

FRI, SAT & SUN

- 10.45 am Unheard-of Edibles for your Kitchen Garden
Neville Passmore
- 11.45 am Steps to Live More Sustainably
Chris Ferreira
- 12.45 pm Indoor Plant Know-how
Claire Greenhill
- 1.45 pm Creating a Firewise Garden
Chris Ferreira
- 2.45 pm Using Foliar Fertilisers for a Turf Perfect Lawn
Baileys

Win 1 of 3 Autumn Garden Gift Packs valued at over \$200
Delivered to your doorstep!

Name: _____

Email: _____

Postcode: _____

Fill out and drop off at our site to enter

YOUR GUIDE TO AUTUMN PLANTING *with Baileys*

"Autumn is for planting" was a theme taken up by the nursery industry to guide gardeners towards more successful plantings compared to those in spring and summer. It truly is the ideal time to plant almost anything (but tropical plants) now in WA, with milder temperatures and warm, moist soils making plants leap into growth and flower. When winter rains come, new plants are assured of adequate moisture for solid root establishment right through to spring. As summer returns over the horizon, new plants have had 6-7 months to establish before temperatures begin to get uncomfortable, by which time, the odds of survival are in their favour.

So perfect planting conditions, but what to plant? Bring on the Perth Garden Festival, designed to inspire and deliver new release varieties and garden favourites from the best nurseries in WA. Something for everyone, all in one place, happy days!

Soil Preparation

First things first, all gardeners in WA should be aware of our need for serious soil improvement. Our natural infertile sandy soils lack minerals, humus, soil life and moisture reserves and are notoriously hydrophobic (water repellent).

The solution is the addition of clay, silts and quality compost – to build the soil texture towards one that resembles a fertile loam. Baileys have developed a product, aptly named - Soil Matters® Clay & Compost, for this very purpose. Each bag contains 10kg of Soil Solver mineralised clay, fully composted chicken manure, soil conditioner and wetting agent. Mix very well with existing soil, water in and get planting. Your plants will thank you for it.



Edibles

Veggie gardening makes economic sense through autumn and winter as rain provides free water. Now's the time to clean up the patch and prepare for cool season crops.

- These include the onion tribe (onions, chives, garlic, leeks and garlic chives) as well as the superfood, cancer fighting cabbage family - broccoli, cauliflower, kale, cabbage, Chinese cabbage and kohlrabi. For something different, don't look past oriental varieties such as pak choi, mibuna, mizuna and wong bok. Also, lettuce, silver beet, Swiss chard, English spinach, peas, broad beans, turnip, Swede, carrots, Florence fennel, endive, kohlrabi, beetroot and potatoes.
- Plant individual cloves of garlic about 5cm deep, pointy end up, in a sunny spot. Takes 6-8 months or more to mature.
- Introduce local flavour to your kitchen garden by growing native bush tucker. These guys are naturally adapted to our climate. Try Lemon Myrtle, Davidson Plum and Mountain Pepperberry.
- The perfect time to plant Figs is autumn and winter, buy bare-rooted stock or in pots now.
- Get citrus trees started while soil is warm and rain is imminent. The choice of different varieties is great this time of year. Pick a sunny spot in the garden or pot into Baileys Premium Potting Mix and move as required.
- Get a worm farm going. It's an ideal time with cooler conditions. This is a terrific project for involving kids and to help recycle kitchen waste.

Ornamentals

Perth garden festival is the perfect place to get advice on ornamental trees, shrubs, grasses, ground covers, natives and colour for garden beds and pots. Bring a photo with you to ID and order.



- Time to plant spring flowering bulbs such as tulips for a miraculous flower show. One idea is to over plant these with pansy, viola or alyssum to give you colour in winter before the bulbs show their heads.
- Sow poppy, Forget Me Not, calendula, lobelia and delphinium seeds. Sow everlasting seed by the handful after first rains for a blast of spring colour.
- Autumn is a great time to feed the whole garden as soils will be depleted after warm season growth. Old staples like Blood & Bone can be spread around or try a new age biological product like Baileys Soil Matters® Garden. This product is based on blood & bone, but has the full suite of macro and micro nutrients incorporated, along with humates and a microbial coating to boost those vital soil populations.

Lawns

It's a great time to lay a new lawn and revitalise established ones after a hot summer. A healthy lawn heading into winter will help hold out weeds and make for a quick spring recovery.

- Autumn fertilising is the most important of the year, encouraging prolonged growth, thick coverage and extended colour heading into winter. Apply a granular feed of Baileys 3.1.1. Plus, in early May. This also contains the wetting agent Grosorb® to make the most of coming rain.
- When the soil temperature drops in winter, it's time to move to foliar applications to maintain colour and health. Using liquid fertilisers in winter will not only give you better results, it's also better for the environment, reducing leaching. Try Baileys new Turfect® Invigorate and spot the difference.

Want to have a healthy garden
AND save money & water?

IRRIGATION
AUSTRALIA



AN EFFICIENT IRRIGATION SYSTEM IS ESSENTIAL
TO ACHIEVE A THRIVING WATERWISE GARDEN!
FOR PROFESSIONAL ADVICE AND SERVICE, CONTACT
YOUR LOCAL WATERWISE IRRIGATION SPECIALIST.

Endorsed **Waterwise Garden Irrigators** are fully trained in water efficient practices and can design, install, repair and maintain your irrigation system. If you prefer to 'do-it-yourself', get expert advice and purchase quality parts from your local **Waterwise Irrigation Design Shop** (retail outlet).

To find a waterwise irrigation specialist in your local area, scan the QR code to search the Waterwise Irrigation Directory, visit www.waterwiseprograms.com.au or contact Irrigation Australia for more information.



Contact us: (08) 6263 7774 | adminsupport@irrigation.org.au | www.waterwiseprograms.com.au

GARDEN ART

OLD CHAIR TO CHARMING SUCCULENT PLANTER!

By Danni from Fickle Prickles

Have an old chair sitting around the house gathering dust? Well, why not UPCYCLE it into a charming succulent planter and create a unique feature for your garden that will be a talking point for all of your visitors.

Chairs are plentiful at op-shops, recycling centres and road side collections, and they are often made of hard wood, which means a strong sturdy base that will tolerate both water and sunlight. A breezy weekend project, a succulent chair like this will look fabulous in all garden sizes, even the smallest of patio spaces.



PREPARING THE CHAIR

Creating a Hole – Some chairs come with a padded seat, that when removed reveal a perfect frame to plant into. Other chairs will require a hole to be cut in the seat. This extra step can be advantageous, as you can cut the hole to any size

or shape – circular, square, curved at the back. Cut as much or as little of the seat away as you desire.

Building Depth – The deeper the planter box is in the chair, the more established the roots of your plants can become, extending the life of your display. And again, some chairs come with a perfect frame that's a good 5cm – 10cm deep. But if this isn't the case, you may need to add a wooden frame to the bottom of the seat to create some depth. If you're not the best at DIY wood work, don't be afraid! It doesn't have to look super neat; you won't see much of the frame once it is all planted up.



Attaching a Bottom – We stapled wire mesh to the bottom of our seat's frame. Mesh is ideal to use in this circumstance, as it allows water to drain freely. Don't worry about your potting mix falling through just yet - We will cover that shortly.

Styling – You can paint your chair in a vibrant colour, or keep it natural like we have done. Shabby chic is popular right now, and is very easy to accomplish by painting on a colour and then sanding it half away. A coat of sealant will protect the wood and make it last longer, but isn't entirely necessary if you don't have the time.

PLANTING IT UP

Moss – Place a layer of sphagnum moss in the bottom of your frame. This will prevent potting mix falling through the mesh. Sphagnum Moss comes in dehydrated bricks and to prepare it, simply soak it in water for 10 to 15 minutes.

Potting Mix – Next, fill with a good quality, free draining cacti and succulent potting mix. Use large natural objects like rocks, logs or drift wood to create height in your base, and then fill in the spaces between with your mix.

Plants – Start by planting the largest feature plants first and work your way down to the small fillers. Combine succulents with similar colours and shapes for a classic, sophisticated design, or play with different colour and shape combinations for a more eclectic look. We have planted ours out entirely with Cacti – Taller ones at the back and squattier ones at the front. We also used a small log as a retaining wall in the middle to give the back section more height.

Mulch - Once you are happy with the design, water in the plants before applying a topping of gravel or small pebbles. A topping like this helps insulate the roots from intense heat or cold and prevents the mix from drying out and becoming water repellent. It is also helpful in securing plants into place, and preventing soil erosion. Water thoroughly a second time to allow the gravel to settle.



MAINTENANCE:

Sun - Keep your chair in a nice, bright spot. Avoid direct sunlight in the afternoon and on days where the temperature is over 38 degrees.

Water - Water thoroughly every couple of days when the weather is mild. Water more often in the hotter months and cut right back during winter.

Pruning and Fertiliser - Prune the foliage every so often to keep the plants nice and compact, and remove any dead foliage. Fertilise with a control release fertiliser as directed.



WE'RE JUST DOWN THE ROAD

YOUR JOHN DEERE DEALER - View or demo our premium range of John Deere small tractors, ride-on mowers & Gator™ utility vehicles.

Proud STIHL Equipment Supplier
Expertly engineered for garden maintenance

EXTENSIVE RANGE OF ATTACHMENTS AVAILABLE

3PL DISCS

ROTARY HOES

SPRAY UNITS

BLADES

SLASHERS

AFGRI Perth - (08) 6278 7711
80 Great Eastern Highway, South Guildford, WA, 6055

Visit www.AFGRI.com.au

We've got strong local roots.



Being your truly WA gas provider means we've got boots on the ground delivering blooming good value to local households. We're also proud to support the community events you've grown to know and love, including the **Perth Garden & Outdoor Living Festival.**

Kleenheat
let life flow

AFGRI Equipment in Perth - We're just down the road

AFGRI Equipment is your local John Deere dealer. Our Perth branch, based in South Guildford, is one of 14 branches across Western Australia. From farming and agriculture to residential lawn and garden, from landscaping and grounds care to golf and sports turf, premium John Deere equipment is designed and engineered to help you get the job done. John Deere has built a tradition of trust and excellence across Australia and all over the world. AFGRI Equipment continuously aims to maintain this level of excellence when supplying equipment to all customers. They do this by listening to their customers and going the extra mile to deliver the best possible solutions to meet their needs. With dedicated sales, service and parts support, AFGRI are proud to partner with customers and make sure their needs are met. Our vision is to be our customers' reliable source of premium new and used equipment, service and solutions. To reach this goal, they have a company culture driven by core values of integrity, teamwork, accountability, passion and service excellence. In Perth, AFGRI are also suppliers of STIHL lawn and garden equipment as well as John Deere

toys, clothing and merchandise, with a wide range available and on display in branch. AFGRI equipment is proud to attend the Perth Garden & Outdoor Festival again this year. Their friendly staff love this time of year and will be there to greet show-goers and answer any questions they may have. AFGRI also understands

the importance of the event to the local area and the joy it brings Perth communities. Be sure to visit the AFGRI site this year to view a premium selection of our John Deere small tractors, residential mowers, GatorTM utilities vehicles and attachments as well as STIHL lawn and garden equipment and a wide range of John Deere toys, clothing and merchandise.




900+ plants

full biosecurity

delivered to you

australianplantsonline.com.au

Now it's easier to bring your dreams to life.

Talk to us about our Low Rate Personal Loan.



Beyond Bank
AUSTRALIA

Before acquiring the product, you should consider if this product is appropriate for you. Terms, conditions, lending criteria, fees and charges apply. Full details are available at the time of application or by contacting us. All loans are provided by Beyond Bank Australia Ltd ABN 15 087 651 143 AFSL/Australian Credit Licence 237856. © 2021.



IT'S ALL IN THE GENES!

LENA ELLIOTT | LAKEHOUSE NURSERY

Today there are over 80,000 registered daylily (Hemerocallis) hybrids, arguably America's top favourite perennial plant. They are categorised into groups of large blooms, doubles, patterned, spider and UFO shapes, and miniature too. They come in every colour except blue!

Daylilies started off as simple diploids, this older style of Daylily had limited colour palette, smaller flowers with narrow petals, limited ruffling and lower bud count with flowers held on tall thin scapes.

Plant scientists then found a way to introduce an extra set of genes to the chromosomes of each cell. These tetraploids have an increased cell size due to this and have a higher ratio of cell contents to the cell wall. In doing so the modern Daylily was born!

Daylilies now have flowers of thick substance that hold up to various weather conditions. They have a high bud count 20-30 per scape, they are larger (some spanning 18cm), they have thicker substance and sculpture, and are re-bloomers too.

The overall sentiment from plant lovers and non-plant lovers is WOW! They are amazing, stunning, how did they do that? This obsession for their beauty can be found in the name hybridizers give their new introductions such as: Answering angels, chorus of angels, celebration of angels, calling all angels, in search of angels, heavens glory, how beautiful heaven must be, lord of lightning, pathway to paradise, sweet love of heaven, the wonder of it all.

YOU CAN'T BEAT EXPERIENCE

LAWN DOCTOR TURF SOLUTIONS HAS BEEN GROWING, MAINTAINING AND RENOVATING LAWN IN PERTH FOR OVER 40 YEARS

AUSGAP CERTIFIED

- DNA Certified Sir Walter
- Wintergreen Couch
- Kikuyu
- Sir Grange Zoysia
- TifTuf Hybrid Bermuda

DIRECT from our farm

CHOOSE contactless delivery or collection from our Lawn Doctor Turf shop in Wangarra.

Lawn Doctor's Turf Shop & Display Centre is
PERTH'S ONLY LAWN RETAIL OUTLET

➔ **1 DELLAMARTA RD WANGARRA**

- Full Range of Lawn Products
- Knowledgeable Staff
- Organic Gardening Products

✓ **YOUR LAWN EXPERTS** ✓



**THE BEST OAT MILK IS
MADE FROM WA OATS**

OATUP.COM.AU



Department of
**Primary Industries and
Regional Development**

The Department of Primary Industries and Regional Development protects our environment and primary industries from the challenges of pests and diseases, soil health and climate change.

However, we can't do it alone!

Come take a journey with us and discover how we can work together for a sustainable future.



WA free from damaging pests and diseases.

We have developed new technologies, including the MyPestGuide™ Reporter tool, so everyone can make reports and help fend off serious threats like myrtle rust, European wasp, red imported fire ants, Queensland fruit fly, cacti, feral animals and other interesting organisms.

These reports help us respond early to exotic pest detections, maximising efforts to eradicate or contain pests, to keep trade markets open.

We all have a role to play. State and local government, industry, individual businesses and households are all needed to support a sustainable future.

So take a journey with us to learn what the Department of Primary Industries and Regional Development is doing to sustain our primary industries and protect the natural environment.

Visit our Sustainability Precinct, and learn about the simple actions you can take in your everyday lives that can make a difference.



Report your observations



MyPestGuide™ Reporter
via app or online mypestguide.agric.wa.gov.au



Pest and Disease Information Service
(08) 9368 3080 or padis@dpird.wa.gov.au

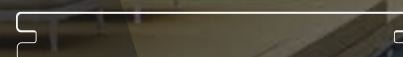
Decking Perth® has everything you need for your decking projects, whether you are looking for low maintenance composite or timber decking.

Decking Perth® is proud to introduce APEX® an exceptionally high quality and low maintenance co-extruded composite decking line by Eva-Last®.



EVA-LAST®

INSPIRED BY NATURE, DESIGNED FOR LIFE.



Wide 190 mm profile

Apex®



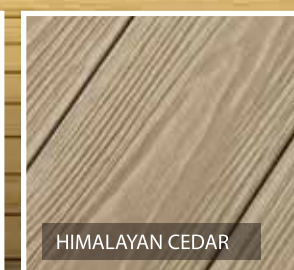
BAMBOO FILLED CELLULAR PVC
COMPOSITE DECKING RANGE



BRAZILIAN TEAK



ISLAND MAHOGANY



HIMALAYAN CEDAR



ALASKAN DRIFTWOOD

INTRODUCING APEX®

THE PINNACLE OF COMPOSITE DECKING

Apex® has a revolutionary lightweight foamed PVC core which provides the strength and durability of much heavier boards, but at a significantly lighter weight which increases its versatility, and makes installation easier and more efficient. This capped decking and screening range uses the highest grade of premium acrylic polymer, and is backed by an industry leading 30-year warranty for stain and fade resistance. Come on down to our showroom in Balcatta to see our brand new decking displays!

20 MACADAM PLACE,
BALCATT WA 6021

www.deckingperth.com.au
www.shop.deckingperth.com.au

T: 9240 7345
E: decks@deckingperth.com.au

COMPOSITE VS TIMBER DECKING

Before you start selecting colours or the width of your decking, you'll need to make an important decision – composite or timber. Both products create a beautiful outdoor area and boast many unique benefits. So which side of the deck do you sit on, composite or timber?

COMPOSITE DECKING

Composite Decking is a man made, eco-friendly timber/plastic product. Made up of 95% recycled wood fibres and recycled plastic, the composite material has unique characteristics.

Composite timber is one of the most durable decking products on the market. The surface is resistant to fading, staining, scratching and mould as it is capped, requiring only semi-annual cleaning with a hose and general household cleaner. It is aesthetically pleasing to the eye with a consistent grain colour throughout.

BENEFITS

- Eco-friendly
- Mimics grains and colours of timber
- Easy to install
- Low maintenance
- Resistant to mould & Insects
- No rotting boards to replace
- No wood splinters, twist, cupping or wood splits
- Stain and weather resistant
- Regular standardised board length
- Anti-slip properties

TIMBER DECKING

Timber Decking is the original building material and comes in both hardwood and softwood varieties. All outdoor timber decking requires maintenance and care to ensure a long-lasting look.

Timber decking comes in a variety of species that are highly resilient and durable. The wood has a sleek natural look that can be modified to complement any outdoor colour scheme. The surface can tend to fade and change in the climate, so regular maintenance is necessary.

BENEFITS

- Natural and unique appearance of each wooden board
- Strong and durable
- Less likely to sustain marks and scratches
- Each hardwood has natural benefits
- Versatile
- Easy to work with
- Initially cheaper than composite timber

gives you a better-looking deck for longer. The polymer capping helps prevent scratches and stains and its UV resistance stops colour fading. It is also mould, mildew and weather resistant making it the ideal choice for pools and areas exposed to the weather.

If sustainability is a deciding factor, you'll be happy to know that Apex™ is made from recycled materials including raw bamboo, which is one of the fastest growing timbers.

A PERFECT CHOICE FOR AUSTRALIAN BACKYARDS

Eva-Last® manufactures decking to suit all climates – specifically warmer climates like Australia. The Apex™ range is UV resistant, so even in harsh weather conditions, it won't lose its look or colour. The tough PVC capping creates a deck that's scratch, stain, slip, fade and moisture resistant.

Your backyard should be enjoyed, not a chore. With Eva-Last® Apex™ you get more time relaxing and less time cleaning. You'll never need to paint, sand or stain and maintaining your deck is easy.

WHY APEX™ IS THE TOP CHOICE

Lighter - Apex™ is up to 45% lighter than some composite brands making it easier to install.

Stronger – The PVC and bamboo core, capped with an acrylic polymer shell, creates a stronger, longer-lasting deck.

Safer - Apex™ offers the best slip resistance in its class (P5). Even when used in wet areas.

Modern – An amazing range of colours that will enhance any outdoor area.

Realistic – Its dual tone profile creates a deck that looks more like a wood deck than any composite.

Low Maintenance – No sanding, painting, oiling or staining. Plus, cleaning is simple.

Long lasting – UV resistant, moisture resistant, scratch, stain and fade resistant.

Peace of Mind - Backed up by an amazing 30 year warranty.

THE PINNACLE OF COMPOSITE DECKING

The evolution of composite decking has reached new heights with the release of Apex™ PVC decking by Eva-Last®. As one of the lightest, strongest and most natural-looking composite decks ever made, Apex™ is the ideal choice for residential and commercial properties.

The secret is in the design. Apex™ is engineered using a lightweight bamboo core surrounded by a highly durable shell of premium PVC. As a strong and lightweight product, it's easier to install and longer lasting.

A COMBINATION OF DURABILITY AND LOOKS

Eva-Last's Apex™ decking is available in 4 amazing dual tone colours. Using a unique process of layering the colours, they have created a composite board that looks just like natural hardwood. The extra layer also creates a solid capping on the board which makes it more durable and increases its anti-slip rating.

Using premium capping technology, Apex™ decking



Quality soils made with love for WA conditions.

The Green Life Soil Co created Perth's first Certified Organic soils in 2008, and continues to be a leader in quality soil mixes and soil improvers designed for WA's unique conditions.

No matter what your vision for your garden, talk to us about how we can help. We're Perth's organic garden specialists.

Winner - 'People's Choice Award' - Organic Specialist 2018 & 2020

Winner - 'Sustainable Business' - WA Small Business Awards 2018 & 2019

Call: (08) 9250 4575

166 Wilson Road, Middle Swan WA 6056

www.greenlifesoil.com.au





For Bigger, Beautiful, Brighter Gardens



www.seasol.com.au

Seasol
a better way to grow

Battery power is now Honda power+

HHB36 BLOWER **NEW** **\$549** RRP SKIN ONLY

- + Powerful and superior air volume 730-860m³/h (nozzle dependent)
- + Interchangeable flat and round nozzles included for advanced versatility
- + Weight assisting belt included for optimum handling
- + Compatible with 4Ah, 6Ah and 9Ah Honda battery range

- Weatherproof
- 68m/s^{max} Maximum wind speed
- Contractor Quality
- Battery powered

Buy 2 skins + 1 Battery & get a **FREE CHARGER**

IZY-ON™ HRG416 XB BATTERY PUSH MOWER

- + Easy start push button
- + Six cutting height positions
- + 41cm (16") pressed steel, powder coated deck
- + Powerful 1.0kW brushless motor
- + Compatible with 4Ah, 6Ah and 9Ah Honda battery range

\$949 RRP SKIN ONLY

- Weatherproof
- Battery powered

HHH36 HEDGE CUTTER

- + 600mm Swiss Steel cutting blades
- + Stall Free Operation with its intelligent auto release
- + 3-way adjustable rear handle
- + Optional weight assisting belt for optimum handling*
- + Compatible with 4.0Ah, 6.0Ah and 9.0Ah Honda battery range

\$879 RRP SKIN ONLY

- Weatherproof
- Low vibration
- Contractor Quality
- Battery powered

HHT36 BRUSHCUTTER

- + Stall Free Operation with its intelligent auto release
- + Ergonomically designed bike handle for comfort and reduced fatigue
- + Fully adjustable harness and 3-tooth blade and line head included
- + Compatible with 4.0Ah, 6.0Ah and 9.0Ah Honda battery range

\$849 RRP SKIN ONLY

- Weatherproof
- Low Noise 93dBA
- Contractor Quality
- Battery powered



Get into your specialist Honda dealer today and ask about the full range of products. Call 1300 1 HONDA or visit honda.com.au

CORDLESS+ PERFORMANCE SERIES

HONDA

*Using a flat nozzle **Only using 36V 9.0Ah battery *Conditions apply † For optimum battery performance, 6Ah and 9Ah batteries are recommended **Optional weight assisting belt not included. †See honda.com.au for conditions.

YOU BRING THE DREAM, WE'LL BRING THE HowTo.

QUALITY OUTDOOR SOLUTIONS

With over 70 years experience in the building and home improvement industry, Stratco has the **HowTo** to help with your next project.

Our helpful team is available with excellent technical advice and expert tips to help you create your own customised solution to any building or outdoor living project:

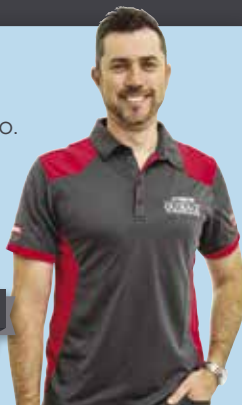
- Stratco Outback® Patios and Carports
- Roofing and walling, gutter and fascia, downpipes and flashings
- Decking and timber supplies
- Outdoor furniture and BBQs
- Fencing and screening
- Sheds and garages
- Suitable for DIY OR we can arrange installation

Talk to us today!

STRATCO - THE PATIO EXPERTS!

Our patio experts can create your perfect patio. We can arrange an **Authorised Outback Dealer** to visit your home and custom design, supply and install your patio.

Plus, Stratco Outback® Patios are covered by a 25 Year Structural Warranty for your peace of mind.



Colorbond®

CALL STRATCO TODAY TO GET YOUR NEXT PROJECT STARTED!



Phone 1300 145 145
Visit stratco.com.au

« Scan this QR code to find your nearest Stratco store.

HowTo. **STRATCO**

COLORBOND® is a registered trade mark of BlueScope Limited. ©2020 BlueScope Steel Limited ABN 16 000 011 058. All rights reserved.

AUTUMN PLANTING TIPS FROM SEASOL

Autumn is a great time to plant just about everything from shrubs and seedlings to vegies. It's also a great time to plant up containers. The key to success is getting the soil or potting mix right before planting. Here's a step-by-step plan for good soil preparation before you start planting.

STEP 1

Cleaning and clearing Lightly dig over the soil to remove weeds, old roots and stones and to break up clods. Take care digging around existing plants as you don't want to disturb their root systems. Keep an eye out for soil-borne pests such as curl grubs and remove them.

STEP 3

In with the organic matter Further improve the soil by digging in well-composted organic matter such as manure or well-rotted compost. If possible, leave the soil to rest for a couple of weeks before planting to let beneficial organisms in the soil get to work. If you don't want to plant an autumn crop, sow a green manure crop instead. Let it grow then dig it back into the soil to replenish nutrients and organic matter.

STEP 5

Planting or sowing Once the soil or potting mix has been prepared, cover it with a thin layer of organic mulch. Water the area well before sowing seeds or planting. At planting, water in with Seasol and remember to reapply regularly (every 2 to 4 weeks). Seasol gives seeds a helping hand to germinate and reduces transplant shock for all plants including natives.

STEP 2

Waterwise If the soil or potting mix is dry, sandy and hard to wet with water either pooling on the soil surface or running off, it is hydrophobic (water repelling). To create soil that absorbs water, treat it with a soil wetter such as Seasol Super Soil Wetter & Conditioner.

STEP 4

What about containers and raised? Replace exhausted mix with new potting mix such as a Premium mix (indicated by a red panel with five ticks on the bag), which contains soil wetter and enough nutrients for the first couple of months of growth. For raised beds, replenish by adding a manure blend. To refresh existing potting mix without replacing it, soak the plant and pot in a bucket of Seasol for a couple of hours to revitalise the plant and potting mix.

STEP 6

Ongoing plant care. Once plants have settled in, they need to be fed to ensure healthy, vigorous growth and an abundance of gorgeous blooms and tasty produce. Apply PowerFeed All Purpose including Natives every 2 to 4 weeks during the growing season. PowerFeed is a dynamic fertiliser and soil conditioner.

SOFTUB IS AN AMERICAN MANUFACTURED HOT TUB SPA THAT IS TRULY PORTABLE AND EXTREMELY ENERGY EFFICIENT.

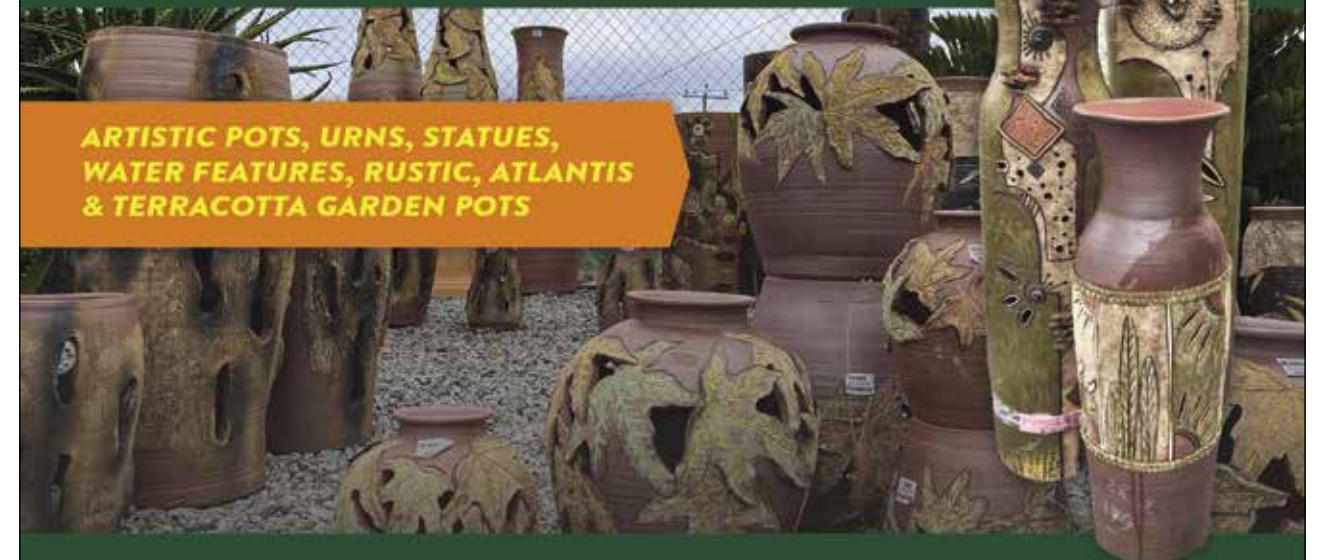
Softub



Contact Kevin on:
0415 896 537 | www.softub.com.au

Madeley
POT ART GALLERY

**ARTISTIC POTS, URNS, STATUES,
WATER FEATURES, RUSTIC, ATLANTIS
& TERRACOTTA GARDEN POTS**



www.madeleypot.com.au | 0447 555 099 | 599 Gnangara Rd, Gnangara WA

The finest outdoor umbrellas in Australia

PREMIUM PRODUCTS FOR PEOPLE WHO WANT TO INVEST IN THEIR OUTDOOR LIFESTYLE



If you are looking for high quality shade options to suit your home or business outdoor area, The SHADOWSPEC range of pool umbrellas, pool shade systems and wind resistant sun shade options consist of the finest in design and construction, and has been thoughtfully designed and developed to accommodate the extremes of the Australian climate.

Contact Kevin on:

0415 896 537 | kevin@exclusiveoutdoors.com.au | www.exclusiveoutdoors.com.au

WINNING PLANTS DON'T JUST HAPPEN

They are cradled, nurtured and loved until they are the **BEST OF THE BEST!**

THESE ARE PROVEN WINNER® PLANTS.

If you are like most gardeners, you may assume that all plants are born pretty much equal! In fact, nothing is further from the truth.

WINNING PLANTS DON'T JUST 'HAPPEN'.

New plants are painstakingly sourced and selected for their genetics by the worlds best horticulturists. These 'babies' are then bred with other perfect selections to create a superior plant.

IT DOESN'T STOP THERE THOUGH...

They are cradled, nurtured and loved into being. They are trialled for hardiness, flowering ability, garden performance, colour and resistance to pests.

Plus, every Proven Winners® plant is screened of plant disease and viral organisms. Only when they pass ALL the tests do they become approved to be a Proven Winners® plant.

YES, THEY'RE THE BEST OF THE BEST!

From little things, big things grow... So it has been with Proven Winners®. In 1992, five wholesale nurserymen

in the U.S.A combined their skills with the aim of growing superior ornamental plants. Today, you'll find hundreds of selected PW plants in just about every garden center in North America. You'll also find partner companies in Europe, South Africa, and Australia.

Proven Winners® Australia brings these stunning plants to you.

SO MANY PLANTS CHOOSE FROM...

Experienced gardeners and landscapers return again and again for these guaranteed quality plants. When you can rely on plants that are unsurpassed in terms of flowering, growth habit, disease resistance and garden performance it is no wonder!



Grow Safe® Fertilisers
Suitable for every application

CONTAINS OVER
60
MINERALS

Including Natural
& Sulphate Nutrients

CONTAINS
6
MICROBIAL SPECIES

Including 14
Different Strains

Minerals & Microbes
Improving Soil, Plant & Human Health



Nutrient Density
With Grow Safe® Minerals



Root Health
With Grow Safe® Microbes

[f @growsafeaustralia](https://www.facebook.com/growsafeaustralia) [@grow_safe](https://www.instagram.com/grow_safe)

growsafe.com.au

2021 FEATURE PLANTS



EREMOPHILA

Australian Native Nurseries will have for sale a large variety of Eremophila species from ground-covers, small shrubs, medium shrubs, tall shrubs through to small trees with every flower colour in the rainbow, and more.



PHOTINIA TRASEN 'BURGUNDY BEAUTY'

Small evergreen shrub or small tree. Ideal hedging plant, specimen shrub or topiary. Large leaves that are bright deep ruby-red new foliage colour, becoming dark green as it matures. Full sun position. Water regularly until plant established. Frost hardy once established. Prune as required. Height 4m x Width 4m approx.

SUDACHI

St. Clements Citrus are proud to announce a new line of Citrus tree to the West Australian market, Sudachi.

The fruit is regarded as a delicacy in parts of Japan, and is often expensive.

Cultivated for centuries in parts of Japan, and perhaps nearly as well known as the yuzu in that country, it has been considered an "indispensable companion" to eating matsutake mushroom and ponzu "pon vinegar" the squeezed citrus juice used as an alternative to vinegar uses sudachi among other bitter oranges.

The tree has white flowers which bloom in October - November. The fruits form in bunches, or tight clusters, and are harvested in Autumn. Sudachi fruit are 20-25g up to 40g max. Though sudachi fruit will eventually develop a yellow-orange rind color, they are normally harvested and used while still green. They contain large smooth seeds.

The sour sudachi is not consumed as whole fruit, but normally squeezed like a lemon or lime to flavor food.

A half-slice of this fruit is served as garnish [6] with many traditional Japanese dishes which include fish, soba, udon, nabe, and even some alcoholic beverages.

It is considered to have a zestier flavor and aroma than lemons or limes. It also boasts a higher calcium and ascorbic acid (vitamin C) content than lemons.

We have a limited number of Sudachi trees in 4 litre pots for sale at Perth Garden Festival, so be quick to grab yours!



LEWISIA COTYLEDON 'ELISE'

From the Portulaca family, Lewisia offers low growing rosettes of fleshy, green leaves. In spring to summer, you can experience clusters of pastel coloured flowers ranging from pink, orange, white, yellow and bicolour patterns.

Easy to grow, Elise is a charming addition to any container or rockery garden. Sun/Part Shade.



CARNIVOROUS, TROPICAL AND INDOOR PLANTS



Venus Fly Trap



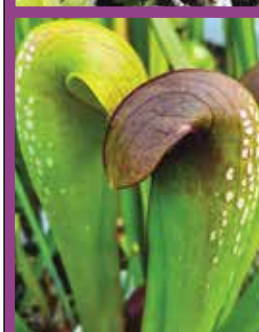
Nepenthes Pitcher Plant



Venus Fly Trap



Garden Plantiques



Purple Sarracenia



Pink Sarracenia

Old Oak Garden Centre specializes in unique & unusual plants and garden ornaments:

Carnivorous, tropical and indoor plants, Rustic PLANTIQUES, Antiques & collectables, Iron garden furniture, Water features, Bird baths, Statues and ornaments.

Visit our nursery located next to Todd's Auction rooms in Forrestfield. Opening hours: 9am - 5pm Weekdays 10am to 3pm Saturday



293 HAWTIN ROAD FORRESTFIELD - Mobile: 0438 685281 - Facebook/theoldoaknursery
OLD OAK NURSERY & GARDEN CENTRE IN COLLABORATION WITH TODD'S AUCTIONS & RED ROCK NURSERY

2021 **FEATURE** PLANTS

POPPY

Among all of the flowers that evoke a memory or emotion, this flower ranks highly. It speaks of World War I where its red flowers carpeted the fields of the battle fields in France.

AEONIUM BIG BANG

This spectacular Aeonium has dark purple/black leaves with an unusual bright lime green variegation. Great for small gardens, narrow spaces and garden beds, or as a feature plant in a pot or container.

ROSES

There is nothing as elegant as a rose. Whether it be a floribunda full of blooms putting on an amazing show or a hybrid tea with its elegant long stems. Some have a sweet smell and others are extremely fragrant with a large variety we have a rose for everyone. All our roses are grafted onto Fortuniana Rootstock, the "best" for Western Australian harsh conditions.

Be sure to grab your Roses from Supreme Plants at this year's Perth Garden & Outdoor Living Festival.

NEPENTHES PITCHER PLANT

These beautiful insectivorous plants develop colourful pitchers from the end of the leaves to attract and digest all manner of critters.

WATER LILLIES

Water Lilies are arguably one of the most spectacular flowers world wide and the New Hybrid Water Lilies, are taking them to a whole new level of colour. They have been developed with an emphasis on dark, patterned foliage and striking vibrant flower colour, and best of all, they have been bred right here in WA. These will be on show and available to purchase from Woodvale Fish and Lily Farm.

Australia's most popular Bougainvillea...

Smaller growth habit, superior flowering, smaller and fewer thorns



Bambino® - Australia's favourite!



NEW: Ground Huggers



Babybino® are the Bougs for today's smaller gardens.



Compact to 60cm x 60cm in gardens they give a jolt of colour as they flower. Ideal for specimen containers in modern homes on sunny patios or entry ways.

SIMPLE GARDEN LIGHTING

The transformative power of outdoor lighting is as magical as its versatility is astonishing. It can be used to create a majestic backyard landscape befitting a Hollywood home, or to foster a cosy atmosphere, ideal for relaxed alfresco dining and can also enhance your home's safety. The ultimate key to confident decision-making lies in determining the main purpose of your outdoor area and using this as your guiding light.

ACCENT LIGHTING

Used to highlight the key focal points of an outdoor area such as a tree, sculpture, or water feature, or to downplay unsightly elements like a clothesline, shed or downpipe. Considered the most versatile lighting option, a garden spike will make sculptures, trees and palms really stand out. Unfortunately garden spikes are typically used to highlight larger plants and trees. To accentuate low lying plants and lawn ornaments and pathways opt for bollard lighting which cast light in most cases a circular area of up to 5m. To light elevated features from above, a wall light will produce a spotlight effect. Deck lights are a wonderfully effective way to showcase a feature wall. If you have a pond, enchanting underwater lighting can be achieved with Lumenesk's watertight pond lights, which are made from high quality stainless steel to defend against premature corrosion.

TASK LIGHTING

Achieves highly practical outcomes from footpaths and stair illumination to backyard night sports. Correctly locating spotlights and sensors can provide additional security for

the home by detecting motion, which could be as simple as you arrive home. Often used to draw attention to the edge of a platform or pathway for safety, deck lights can be recessed into a deck or any paved surface and will shine light directly upward. For steps and stairways, opt for step lights instead of deck lights, as these will emit a soft light that will highlight the step when mounted above ground. Wall lights will effectively illuminate a barbecue area, a lawn area or a pond when mounted on a wall or pergola post. If you have expansive grounds, flood lighting will enhance the security of your home, while also upholding a luxurious aesthetic at night-time.

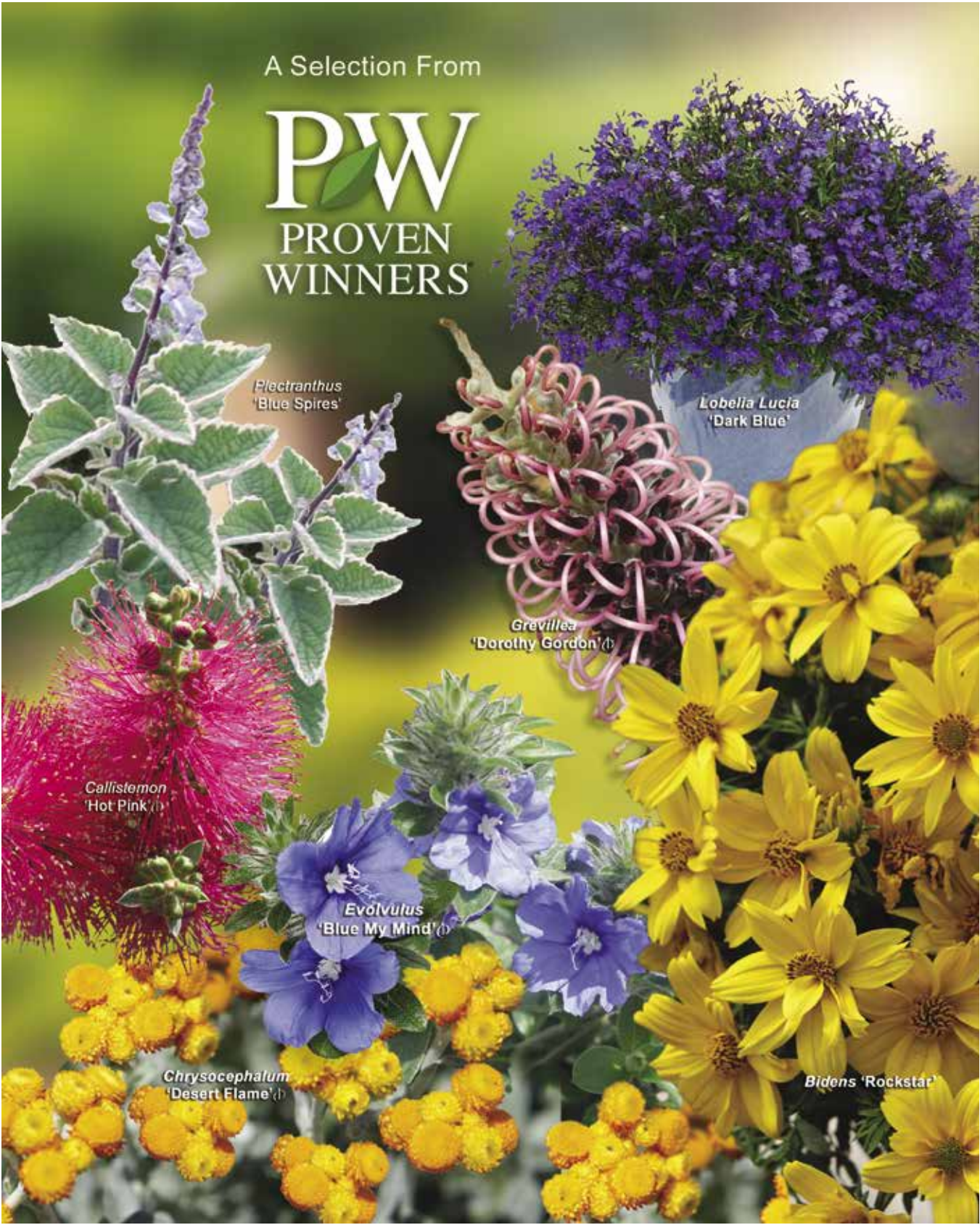
DECORATIVE LIGHTING

Carefully positioned decorative lighting can create an ambient atmosphere and can even make small areas appear larger. Fully adjustable options allow you to brighten the lights when celebrating or dining and soften when relaxing. Fairy lights are great for creating a charming garden feature when they are scattered through a tree. Backlit wall art is another fool proof way to beautify an otherwise dull wall at all hours of the day and night. For something extra special, consulting an expert is a bright idea. You can introduce controlled colour changing options in your lighting systems to really bring your garden to life.

Lumenesk's products are all easy to install. Our staff will happily provide expert advice and assistance to ensure you experience love at first light. Check out the full range of Lumenesk outdoor lighting options and valuable tutorial videos at www.lumenesk.com.au or on display at Tilly's Lights in Osborne Park.

Stunning plants for stunning results

Proven Winners® - the World's No #1 Plant brand. Trialled in recognised research gardens around the world. Proven Winners® brings you vibrant flowering annuals, perennials and shrubs that deliver the most beautiful garden performance.





Open Gardens West Coast

bringing people and gardens together

www.opengardenswestcoast.org

Find us on 



Come through the garden gates with Open Gardens West Coast, a local volunteer based organisation that manages a program of open gardens for the public and also runs 'exclusive members only' events, inspiring and educating gardeners while raising funds for charities and other garden organisations.

Join in	Become a member \$30 per year
<ul style="list-style-type: none">● Visit an Open Garden, see the website calendar● Open your Garden● Become a volunteer● Raise money for your favourite charity	<ul style="list-style-type: none">● Receive regular newsletters● Visit exclusive private open gardens● Enjoy discounts on tickets● Socialise with like minded people

Come and see us in our show garden at the Perth Garden Festival



INSIDE: BENARA NURSERIES

Founded in 1963, Benara Nurseries are a proudly Western Australian owned and operated family business that prides itself on being leaders and innovators in living plants.

Today, Benara Nurseries has grown to encompass 520 acres that are cared for by more than 350 hardworking staff. As one of the largest wholesale nurseries in Australia, Benara Nurseries is dedicated to the highest horticultural standards and utilises world-class, best management practices. Benara have been accredited for both NIASA and EcoHort for several years, these independently-audited schemes ensure Benara maintain the highest standards.

Benara Nurseries supply high quality seedlings, advanced trees, and a wide variety of indoor and outdoor plants to retailers, councils, developers and landscapers both locally and interstate.

Both Benara Nurseries management and staff believe passionately in having a positive impact on the world around them. This

includes contributing to urban cooling, or reducing the heat island effect. Street trees and other green infrastructure such as community parks, waterwise verges, green roofs and living walls help to absorb sunlight and shade hard surfaces, reducing the amount of heat that's released.

Benara Nurseries partner with organisations locally and



around the world to promote the benefits of greenlife and deliver native and waterwise plants to customers across Australia.


Benara Nurseries are privileged to be a partner of the Kings Park Botanical Gardens' plant breeding program, which crafts new plant varieties that reflect the nature of Western Australian flora. New Grevilleas 'Scarlet Moon',



'Outback Sunrise', 'Aphrodite's Dream', 'Cupid's Dream', 'Pink Profusion', 'Tangerine Dream', 'Ruby Dream', and 'Raspberry Dream' are ideal feature plants for waterwise landscapes that aim to attract birds. These grevilleas are bred for compact habits and showstopping flowers, to suit modern smaller gardens.

Through our overseas networks, Benara Nurseries are very excited to introduce new plant varieties to Perth gardeners. The outstanding ground-breaking, black leafed ZZ Plant, Zamioculcas Dark Zamicro PBR and Zamioculcas Raven PBR, are remarkable new varieties of the popular Zamioculcas zamiifolia (also known as ZZ or Zanzibar Gem).

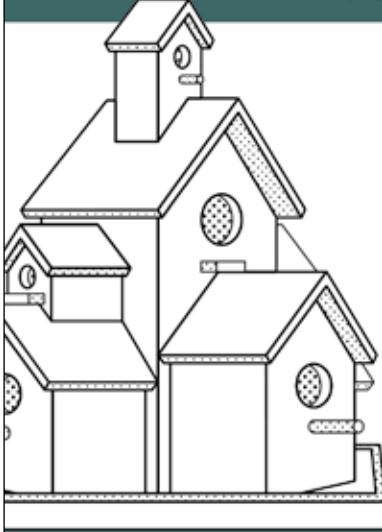
Providing a real feature plant with few demands, these easy to grow varieties can tolerate a slightly forgetful waterer, storing reserves in their roots and rhizomes. The distinctly different Dark Zamicro, is a beautiful mini version with relatively smaller black and green glossy leaflets and compact, upright growth. Raven and Dark Zamicro both show off the stunning natural colour progression, as their leaves develop from vivid lime green to shiny jet-black, offering a strong statement in any space!



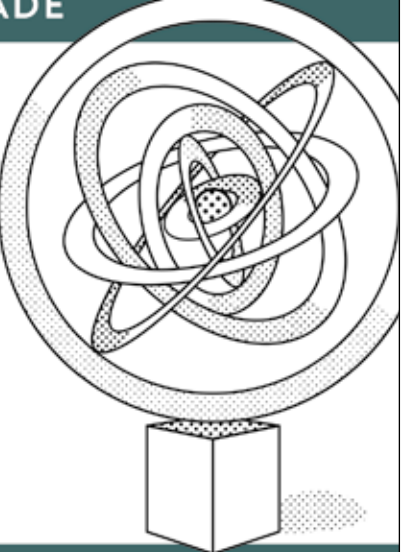
Bird's the Word
est 1998

VISIT
SITE
139

CERTIFIED AUSTRALIAN MADE



For over 20 years
Rod & Gill have
been creating
Birdhouses,
Garden/Wall Art,
Garden Accessories
and Sculptures.

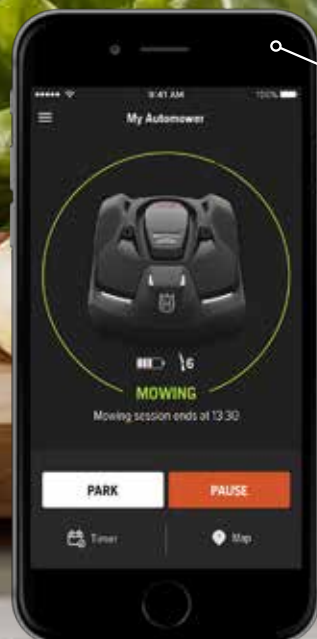


WWW.BIRDHOUSES.COM.AU | PHONE: 0402152847 | EMAIL: RODGILLLEE@GMAIL.COM

f BIRD'S THE WORD (BIRDHOUSES) i BIRDHOUSES AUSTRALIA

UPGRADE YOUR EVERYDAY.

With Automower® connected to your smart home.



DISCOVER OUR INTELLIGENT ROBOTIC MOWERS

A smart home needs a smart lawnmower. That's why we at Husqvarna always develop our robotic mowers with the outstanding reliability of Swedish engineering and the latest user-friendly technology. With Automower® Connect, your robotic mower is ready to become part of your smart home by simply connecting it to either Amazon Alexa or Google Home. GPS assisted navigation and built-in sensors helps the mower adjust to weather conditions and tricky areas. No matter the complexity of your garden, we've got a robotic mower for you at [HUSQVARNA.COM/AUTOMOWER](https://www.husqvarna.com/automower)





PREMIUM MIXERS

BY STRANGELOVE

AVAILABLE AT THE GARDEN BAR

strangelove.com.au

North Perth

Gardening the WA way

In WA, our gardens are as distinctive as our climate.

Gardens suited to our climate need less water, are low maintenance and are filled with beautiful plants.

With a waterwise garden design and the right irrigation, you will be on your way to creating a functional, attractive garden that will thrive in our conditions.

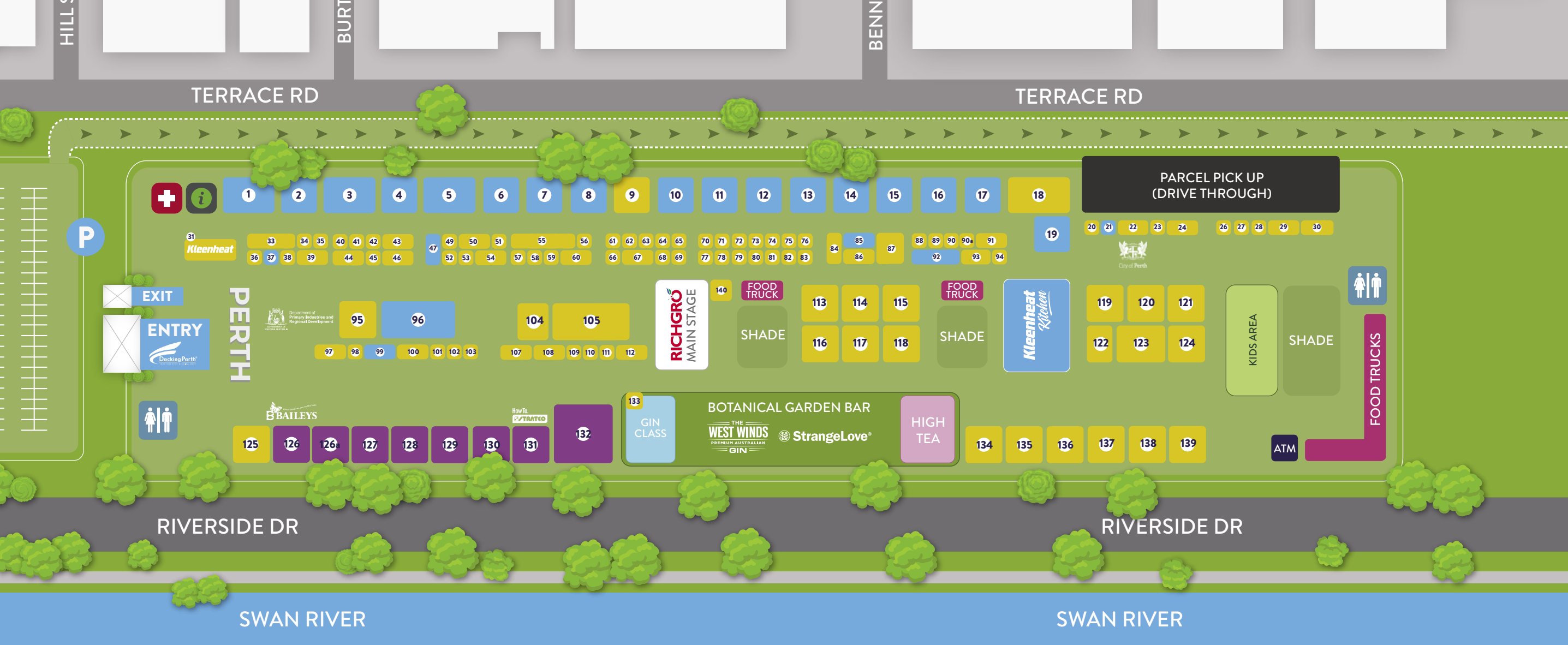
watercorporation.com.au/garden



DEMONSTRATION SCHEDULE

	THURSDAY MAY 6	FRIDAY MAY 7	SATURDAY MAY 8	SUNDAY MAY 9
11.00am - 11.45pm	Caroline Taylor Gnudi's with crispy, free range, Mount Barker chicken	Jenny Lam Potsticker pork dumplings	Guy Jeffreys BBQ Mount Barker chicken thighs and zucchini	Caroline Taylor Pulled Dandaragan Organic Beef short rib with pickles and yoghurt flat bread
12.00pm - 12.45pm	Caroline Taylor Pulled Dandaragan Organic Beef short rib with pickles and yoghurt flat bread	Jenny Lam Vegetarian Vietnamese crepes	Guy Jeffreys Mushrooms and chianti butter on toast	Caroline Taylor Mt Barker Chicken Bo La Lot
1.00pm - 1.45pm	Caroline Taylor Gnudi's with crispy, free range, Mount Barker chicken	Jenny Lam Potsticker pork dumplings	Guy Jeffreys BBQ Mount Barker chicken thighs and zucchini	Caroline Taylor Pulled Dandaragan Organic Beef short rib with pickles and yoghurt flat bread
2.00pm - 2.45pm	<div>RECIPES PAGES 75-79</div>		Guy Jeffreys Mushrooms and chianti butter on toast	Caroline Taylor Mt Barker Chicken Bo La Lot

Compered by Deryn Thorpe from 'All The Dirt' Gardening Podcast



NURSERIES

- 1 Succulents Planet
- 2 Ellenby Tree Farm
- 4 Tucker Bush and WaterGreens
- 5 Lakehouse Nursery
- 6 Supreme Plants
- 7 NGIWA/The Waterwise Centre
- 8 Jungle Living by Birnam Nursery
- 10 Bromeliads WA
- 11 Jane Brooke Nursery
- 12 Tass 1 Trees
- 13 Red Rock Nursery/ The Green Emporium
- 14 Old Oak (The)
- 15 Crazy Garden WA
- 16 St Clements Citrus
- 17 Australian Native Nursery
- 19 Muchea Tree/Plant Farm
- 21 Wildflora Factory
- 37 Fortuna Park
- 47 The Seed Station
- 85 Orchidup
- 92 Succulents Perth
- 96 Fickle Prickles
- 99 Jungle Divine

EXHIBITORS

- Entrance - Decking Perth
- 9 Madeley Pot Art Gallery
- 18 South East Reigonal Centre for Urban Landcare
- 20 Eco Gecko – Environment & Design
- 21 Wildflora Factory
- 22 City of Perth Plant Pickup
- 23 Sharpen-All
- 24 Green World Revolution
- 26 Bonsai Community
- 27 Gardeners Circle of WA
- 28 The Orchid Society of WA
- 29 The Rose Society of WA
- 31 Kleenheat
- 33 CutAbove Tools
- 34 Gardeness
- 35 Willie Wildlife Sculptures
- 36 Pack and Go Trollies
- 38 Flow Sports
- 39 Newcastle Hats
- 40 Ginger, Turmeric, Sarsaparilla, Chilli
- 41 My Foodie Box
- 42 Slobberlicious
- 43 Greenacres Turf Group
- 44 The Charlick Tumeric Method
- 45 Indigo
- 46 Soil Solver
- 48 Whiteman Park
- 50 Villa Carlotta
- 51 Just Socks
- 52 Greens WA
- 53 Enjo
- 54 Vegepod
- 55 Window Wow/TumeriX
- 56 No Frills Fertilisers
- 57 Studio Noah
- 58 Permaculture Association of WA
- 59 Dial Before You Dig
- 60 Water Filtration
- 61 Euro Peeler
- 62 Eco Stoneware
- 63 Rock Ya Pain
- 64 Twiggy Willow
- 65 Proffesional Nibbler
- 66 Step Forward Orthotics
- 67 Using What You've Got/ Community Gardens
- 68 Changeovers
- 69 Sexy Water
- 71 Witherspoons
- 72 Feathers of Australia
- 74 Mockingbird Glass
- 76 Solarfruit
- 77 Darling Bee Honey
- 78 Rust Art
- 80 Mal's Rustic Furniture
- 81 Jax Mosaics
- 82 Possums Lead Light Art
- 83 Woofing Wonders
- 84 Crocs Australia
- 86 Solargrid
- 87 Seasol
- 88 Shutterco
- 89 UrbanStone
- 90 Western Wildflower Group
- 90a Hello Fresh
- 91 Bowman Brush
- 93 Channel Seven
- 94 The FunGuy WA
- 95 Department of Primary Industries and Regional Development
- 97 ZWP Garden Tools
- 98 Beyond Bank
- 100 Arbortech

- 101 Little Veggie Patch
- 102 Guilford Trading Centre
- 103 Cloud 9 Delux Swinging Chairs
- 104 Dsatco Mulch
- 105 Martin Jaine Sculptures
- 107 Softub Australia/Exclusive Outdoors
- 108 Straightcurve Garden Edging
- 109 Beach Shack Showers
- 110 BOQ
- 111 Tilly's Lights
- 112 Decorators and Easy Decks
- 113 Northern Lawnmower & Chainsaw Specialists
- 114 Yardeco
- 115 AFGRI/Greenscape Collective
- 116 Honda
- 117 Metal Art Creations
- 118 Boya Equipment
- 119 Adjusta Mattress Australia
- 120 Makita
- 121 Hort with Heart
- 122 Bupa
- 123 Argossee
- 124 Cartel Concepts

- 125 Lawn Doctor
- 133 West Winds Gin
- 134 Dirty Clean Food and OatUP
- 135 Outdoor Alfresco Kitchen
- 136 Dragon Kiln
- 137 Riverina Pools
- 138 Cool Bean Campers
- 139 Birds The Word
- 140 Richgro
- Cancer Council of WA
- OzShut
- Outback Leather Products

SHOW GARDENS

- 126 Baileys
- 126a Open Gardens West Coast
- 127 Earth & Water
- 128 Wasai Garden
- 129 Heartspace Gardens
- 130 Tucker Bush
- 131 Stratco
- 132 Landscape Industry Association of WA



TifTuf Drought Tolerant Grass is the product of almost 25 years of R&D from one of the world's leading turf grass breeders: The University of Georgia. TifTuf has been selected from almost 30,000 different varieties, showing superior qualities in drought tolerance, shade tolerance, wear tolerance and winter colour whilst at the same time maintaining excellent turf quality. TifTuf uses up to 38% less water than other grass varieties. TifTuf has a very fine leaf blade with dense growth, making it ideal for a wide variety of applications. Its density enables it to handle high wear situations like backyards and sports fields whilst its fine blade ensures shade tolerance and a very soft leaf to walk on.

What is drought tolerance in turf grass?

Drought tolerance is when plants experience drought but don't suffer the physiological damage, retain green colour and even some growth. The plant may exhibit drought tolerance by osmotic adjustment in their cells to retain water and avoid wilt and leaf firing, or by processing stress compounds that protect cell membranes and allow them to continue to function. Studies in

America have proved that TifTuf gets its superior drought tolerance through a combination of these physiological mechanisms within the plant. The University of Queensland has also showed the importance of rhizomes in couch drought resistance, for carbohydrate storage used to maintain colour longer in drought.

But can TifTuf handle Australian conditions?

To determine if TifTuf showed the same outstanding drought tolerance under Australian conditions that it did in America, a trial was conducted by Melbourne Polytechnic to test the drought tolerance of 4 common couch grasses. After a month of droughting, they found that all varieties except TifTuf lost green colour and showed visible signs of water stress (leaf rolling, leaf bronzing or bleaching). TifTuf remained consistently green. They also found that TifTuf produced more rhizomes than the other cultivars, which might contribute to better drought tolerance.

What are you waiting for? Get in touch with Lawn Doctor today to start putting together your TifTuf lawn quote!

	THURSDAY May 6	FRIDAY May 7	SATURDAY May 8	SUNDAY MAY 9
10:00am			DARREN SEINOR Irrigation Australia's Waterwise Garden Irrigator: "How much water does my garden need?"	BOB MELVILLE Rose expert: "Best rose varieties for your garden"
10:30am		SHARON BARBERA Horticulturalist, plant consultant and garden designer: "Best indoor and balcony plants for a green home"	MARK TUCEK 'Tucker Bush' horticulturalist, & Marissa Verma Noongar Educator: "Tucker Bush – edible Australian garden plants"	JOHN COLWILL Horticulturalist and media personality: "WA's native daisies"
11:00am	JACKIE HOOPER horticulturalist, Zanthorrea Nursery: "Australian plants for the cottage garden"	CHARLIE ALBONE Landscape designer, Richgro representative, 'Better Homes and Gardens' presenter: "The top ten garden questions"	CHARLIE ALBONE Landscape designer, Richgro representative, 'Better Homes and Gardens' presenter: "The top ten garden questions"	CHARLIE ALBONE Landscape designer, Richgro representative, 'Better Homes and Gardens' presenter: "The top ten garden questions"
11:30am	ROHAN CARBOON Bushfire safety consultant: "Garden design in bushfire prone areas"	CATHY COCKS Garden Consultant, Guildford Town Garden Centre: "Top productive trees for small gardens"	SABRINA HAHN ABC garden talkback and 'West Australian' newspaper garden writer: "Creating habitat in a small garden"	ROHAN CARBOON Bushfire safety consultant: "Garden design in bushfire prone areas"
12:00pm	BOB HUNTER Chairperson of the Cactus and Succulent Society of WA: "Rescuing sad and sick succulents – bring your unhappy plants for advice"	DAN DOWSETT Life Member WA Apiarists' Society: "Keeping bees"	SUE MCDUGALL 6PR radio garden talkback presenter: "Planting out your autumn vegetable patch"	NEVILLE PASSMORE Horticulturalist: "growing herbs and spices for health and flavour"
12:30pm	DAVID LULLFITZ owner - Nativ by Plantrite: "Transforming your garden with native plants"	MARK TUCEK Horticulturalist and water plant grower: "Cool water plants for health and happiness"	JOSH BYRNE 'ABC TV's Gardening Australia' television presenter and sustainability practitioner: "Gardening for the future"	COLIN BARLOW 'Gardens From Eden' landscaper, media presenter and horticulturalist: "Creating an indoor oasis"
1:00pm	MARK TUCEK 'Tucker Bush' horticulturalist, & Marissa Verma Noongar Educator: "Why we need native edible plants"	CHARLIE ALBONE Landscape designer, Richgro representative, 'Better Homes and Gardens' presenter: "The top ten garden questions"	CHARLIE ALBONE Landscape designer, Richgro representative, 'Better Homes and Gardens' presenter: "The top ten garden questions"	CHARLIE ALBONE Landscape designer, Richgro representative, 'Better Homes and Gardens' presenter: "The top ten garden questions"
1:30pm	NEVILLE PASSMORE Horticulturalist: "growing herbs and spices for health and flavour"	ROSS HOOPER Horticulturalist, Zanthorrea Nursery: "Aussie plants for your verge gardens"	DARREN SEINOR Landscaper 'Garden Solutions' 'Garden Gurus' presenter: "Some gardens are better than others"	CRAIG WOODROFFE 'Ellenby Tree Farm': "Small trees for small gardens"
2:00pm	CHARLIE ALBONE Landscape designer, Richgro representative, 'Better Homes and Gardens' presenter: "The top ten garden questions"	FIONA BLACKHAM Permaculture consultant: "Gardening the spray free way"	SCOTT CAIN Indoor plant enthusiast: "Easy indoor and balcony plants for Perth gardens"	CHRIS FERREIRA Sustainability consultant: "Inspired infill development where gardens create a cohesive community"
2:30pm	DERYN THORPE 'All The Dirt' podcaster, writer for 'Gardening Australia' magazine: "Propagation: creating plants from cuttings, seeds and division"	ADRIAN MASON Owner, Decking Perth: "Choosing between timber or composite decking"	FAYE ARCARO Cohost of 'Let's Talk Gardening', Curtin 100.1FM Radio: "A home for everyone – attracting beneficial insects"	LEESA CALDWELL Master herbalist: "Growing herbs for food and medicine"
3:00pm	SAMANTHA BRIDGEWOOD Department of Primary Industry and Development (DPIRD): "Freshwater invasive fish in Perth's rivers"	SONYA BROUGHTON Department of Primary Industry and Development (DPIRD)	HELEN SPAFFORD Department of Primary Industry and Development (DPIRD): "Fighting the ferocious fall armyworm: what Perth gardeners need to know"	Department of Primary Industry and Development (DPIRD)

Succulents

Classic and RARE species

CACTI & LITHOPS

POTS & PLANTERS

WREATH SUPPLIES

MINIATURE GARDEN

Houses, furniture & accessories

High Quality

Locally grown to suit WA conditions

IDEAS AND INSPIRATION for your home and garden!

PROFESSIONAL ADVICE

Plants come LABELLED with their name, height, habit & care instructions

Online Store Only | Delivery in WA

Proud member of the Nursery & Garden Industry WA

SITE 96

Est 2007

[f](#) [i](#) [p](#)

FICKLEPRICKLES.COM.AU

Build yourself a garden bed for some DIY fun!

straightcurve®

Meet the team at Straightcurve stand today and find out which products are most suitable for your garden bed ideas!

Looking for a fun backyard DIY project to tackle? Building a garden bed could be the go! Get out of the house and into the fresh air, whilst creating a lasting reason to go out there more often.

Building a garden bed is super easy with Straightcurve products. First, you need to decide what you're building that garden bed for. Here are some garden bed project ideas and the Straightcurve products that are best suited for the job.

VEGGIE PATCH

Fresh food on tap, what's not to love? Growing your own veggies is easier than you might think and there's something really rewarding about picking vegetables out of your garden to eat. The freshness also means high nutrient density in the vegetables so you're getting more bang for your buck there too. If you feel like veggies might be too much of a commitment, herb gardens are super useful and require a lot less maintenance. There are a couple of ways to approach building a garden bed for vegetables with Straightcurve products.

PLANTER BOXES

The simplest choice is to go with one of our raised planter boxes. You can opt for 400mm or 560mm fixed height planter boxes depending on how high you want the finished garden bed to be. A variety of available panels lengths allow for either a square or rectangular shape to suit your preferences.

ABOVE GROUND RIGIDLINE OR FLEXLINE

If you want more flexibility with the size or shape of your garden bed our above ground solutions are the way to go. Rigidline is the best option for perfectly straight lines whilst Flexline would be ideal if you wanted a more organic shape. We'd recommend the 400mm or 560mm high panels for better drainage through the soil.

FEATURE BED

Feel like your garden could use a makeover? There's no reason why you can't build a garden bed purely for aesthetic reasons. Add a bit of hierarchy and definition to your backyard with a feature bed or two. Again, you could go for the above ground or planter box solutions here.

SANDPIT

Who says you have to build a garden bed exclusively for gardening? The kids will love a sandpit in the backyard and it'll keep them entertained for hours. We'd recommend either 240mm Rigidline for something boxy, or 240mm Flexline for a more organic shape. Pro Tip - add some carpet off-cuts (or similar) to line the inside of the joins as a safety precaution.



LUMENESK
simple garden lighting

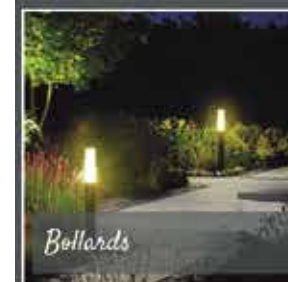
We didn't invent lighting.....we made it easy

www.lumenesk.com.au



Do It Yourself garden lighting
that connects in minutes.

Transform your garden.



Bollards



Deck & Inground



Step Lights



Wall Art



LED Strip

Available at

 **Tilly's** Lighting Solutions

443 Scarborough Beach Rd Osborne Park | (08) 9242 5160



THE FUTURE OF GARDENING IS ALREADY HERE AND IT'S COMING TO A BACKYARD NEAR YOU!

If you've ever driven down a street and seen a small, black, almost beetle looking device seemingly gliding over a lawn, you've seen a robotic mower. While the idea of a robotic mower taking care of your lawn may seem odd, the category has actually been around for some time. It represents the ultimate combination of a higher quality lawn with the perfect cut and huge time savings - a very valuable combination.

Husqvarna has been leading the charge in innovative gardening technology for over 25 years, and robotic mowers are the ultimate in automation when it comes to keeping your lawn in top shape. With a wide range of models available, Automower® comes in a variety of sizes and is packed full of features to tackle the lawn care of even the most complex gardens, effortlessly.

HOW DOES IT WORK?

Focused on maintaining a beautifully kept lawn no matter the weather, Husqvarna Automower® quietly, efficiently and autonomously gives a better finish than any other mower, unlocking hours of free time. Cutting both dry and wet grass, all clippings produced are returned to the soil to provide nutrients back to the earth. The functionality and durability of Automower® is unrivalled, with select models including features like Automower® Connect, GPS and LED Headlights. The range can cover lawn sizes of up to 5,000sqm and manage inclines up to 35 degrees.

Downloading the Automower® Connect app, free with purchase, allows for complete control of select Automower® models from anywhere. You can even control your Automower® at home through voice control via Google Home or Amazon Alexa.

You'll also see GPS theft tracking and GPS assisted navigation in play - this creates a map of the garden, including where the boundary and guide wires are installed. Automower® will then register which parts of the garden it has covered, adjusting its mowing pattern accordingly. No guesswork here!

From small to complex gardens, Automower® can also navigate inclines, narrow passages and remote objects with ease.

Built for safety, the blades will automatically stop if the mower is lifted up or turned over, but also comes with anti-theft protection. An alarm will sound if the mower is stopped or lifted without the required pin code. Stolen mowers can't be matched to other charging stations and are red-listed in all support.

Husqvarna Automower® will get the job done efficiently and is designed to operate even in the most demanding of environments. When running low on battery, Automower® will return back to the charging station and then return to work once the batteries have been replenished - and because it is 100% battery powered, Husqvarna Automower® generates no direct emissions.

Discover which Husqvarna Automower® suits your garden. View the range online or visit one of 370+ Husqvarna dealers nationwide.



YOUR ONE-STOP LANDSCAPE SUPPLIES SHOP NOW HAS THE MOST AMAZING INDOOR PLANTS BOUTIQUE. FILLED WITH UNIQUE CERAMICS, BASKETS AND PERTH'S BIGGEST RANGE OF BEAUTIFUL INDOOR PLANTS.

📍 139 STIRLING HWY, NORTH FREMANTLE



**CREATION
LANDSCAPE
SUPPLIES**.COM.AU

PRESENT THIS PAGE FOR
20% OFF YOUR FIRST
PLANT SHOP PURCHASE

Valid until 31st July 2021

📷 @creation_landscape_supplies

📞 9335 7383

TUCKER BUSH

Marissa Verma is Perth's finest Aboriginal cultural consultant. Knowledgeable and backed by Noongar Elders, Marissa shares Aboriginal culture with the wider community through her successful 100% Aboriginal-owned and operated business, Bindi Bindi Dreaming.



Tony Green from Think Green Waterscapes is W.A's leading "Aquascaper" and won "Best in Show" and a Gold medal from Perth GF 2019. "Our business ethic is to use local, natural and recycled products wherever possible so we often have a high proportion of elements like natural rocks, water, timber decking and compacted gravel in our gardens."

LEESA HART

This year's garden is called 'One for All'. It is designed to honour three beautiful children Soren, Saoirse, and Connor O'Shea who were killed in a car accident, and to promote awareness of the charity '3 Musketeers' begun by their parents Maria and Brian O'Shea in memory of their children.



'One for All' is loosely divided into 'rooms' to reflect aspects of the children's personalities, yet it all ties together as one garden:

- Saoirse's garden is full of colour and abundance. Saoirse loved butterflies so the plants are butterfly and bird attracting, bringing in life to the garden.
- Soren's garden is calm and sheltering, much like the big brother he was. This part of the garden creates a space to come together
- Connor's garden is bright, playful and fun, with plants that move constantly, much like Connor himself.

'One for All' is a life affirming and joyful garden, a feast for the senses and a place for all things – to play, explore, wonder and wander, or to sit in quiet contemplation, soothed by the wind through the trees and grasses. 'One for All' is a place of memory, peace, hope and LIFE.

OPEN GARDENS WEST COAST

Come along to the Perth Garden Festival and meet up with some of the Open Gardens team at their very first Show Garden, 'Through the Garden Gates' built by LIAWA's Next Gen group.



DAICHI HAYASHI

Although, reputed for his ability to integrate and synthesise foreign styles his primary objective is to make the world beautiful. Allowing his audience to feel good and happy while appreciating the beauty of nature - releasing unconscious stress.



Landcare is a grassroots movement of community with a shared vision to restore and protect the environment for their local community through onground works and advocacy – to ensure the land is left in a better way for future generations.

Volunteers make a valuable contribution to conservation of the natural environment in WA. Every year landcare groups contribute 100,000's of volunteer hours and millions of dollars' worth of conservation activities.

There are many environmental groups throughout WA working closely with other community groups, landholders, all levels of government on environmental matters.

They do this amongst other things:

- Undertake on-ground activities such as revegetation, weeding, flora and fauna surveying, seed collecting, water quality monitoring
- Educating community on environmental needs
- Advocating for environment issues and funding

In the Urban Landcare marquee, there are just a few of the many environmental groups who operate in the South East corridor of the Metropolitan area, more can be found throughout metro area and beyond.



LANDCARE

South East Regional Centre for Urban Landcare
www.sercul.org.au

SERCUL is a sub-regional organisation that operates within the metropolitan and peri urban areas of the Swan-Canning River Catchment to improve the health of our land and waterways.

We work with all levels of government, business, community and volunteers to care for the environment. This is done in many ways – through landcare, restoration, education, monitoring and research - to improve biodiversity; protect riverine and wetland environments and engage with our extensive community network to increase knowledge and skills in environmental management.

Landcare SJ Inc.
www.LandcareSJ.com.au

Landcare SJ Inc coordinates landcare, bushcare and catchment care in the districts of Serpentine Jarrahdale and North Murray – a rural and semi-rural environment. Providing leadership to access, initiate and integrate the resources to enable community groups to manage the land, water and remnant vegetation in a sustainable manner in partnership with government.

Development of the COCKATUBE ® artificial nesting box for the critically endangered Black Cockatoo birds is one of our success stories.

Armadales Gosnells Landcare Group
www.aglg.org.au

The Armadale Gosnells Landcare Group has been established 23 years. They have a formal partnership with Cities of Armadale and Gosnells, believed to be a first in WA for a landcare organisation. AGLG currently has 3 staff and a committee of volunteer members who share a passion for protecting their local environment.

Wildflower Society of WA – Armadale Branch
www.WildflowersArmadale.org.au

Formed in March 1961, the Armadale Branch is one of the oldest branches in the Wildflower Society Throughout 2021, the 60th anniversary will be celebrated with many wildflower events. Branch members actively participate in the conservation and revegetation of bushland parks and reserves in the Armadale region including Bungendore Park and Armadale Settlers' Common.

Bungendore Park Environmental Group (BPEG)

BPEG work with the City of Armadale in managing Bungendore Park. Consisting of 498 hectares, it is located on the edge of the Darling Scarp approximately 30 km southeast of Perth and approximately 5 km south of central Armadale.

Armadale Settlers' Common Working Group
www.armadale.wa.gov.au/important-bushland

Armadale Settlers Common is a unique piece of bush located at the doorstep of City of Armadale. It is approximately 383 ha - an integral part of the Darling Scarp and includes the Heritage Country Tourist Drive. It has high values and is favoured for bushwalking and other forms of recreation. Walk trails established include an asphalt accessible trail for the disabled. The Group assists with activities, such as regenerating the bush, nurturing wildlife and eradicating weeds and unwanted animals.



WILLIE WILDLIFE SCULPTURES
"The World's Finest Birdbaths"
 Made in Ocean Grove, Australia

Stand 35



600mm Blue Wren & Willy-Wagtail Birdbath

New designs are launched at the Chelsea Flower Show, London



600mm Garden Frog Birdbath

A Willie Wildlife Sculpture makes a Special Gift for a Special Person on a Special Occasion



Platypus

Frill Neck Lizard

Echidna

williewildlifesculptures.com.au



Nestled in the heart of the Mundaring industrial estate, Newcastle Hats is a local manufacturer of quality bush hats and industrial headwear. Always striving to support the local community, Newcastle Hats employs local staff and uses Australian components wherever possible.

Newcastle Hats manufactures a collection of quality wide brim hats for a variety of uses – from durable school hats to earmuff hats, we make them all. Our Australian made hats aren't just for looks, they are made to withstand the toughest conditions because we use the very best materials sourced from Australian suppliers nationwide.

Newcastle Hats strive to provide the best possible protection from the sun. Most of the fabrics used in the construction of our hats are UPF 50+ rated (with the obvious exception of the Breeze mesh), and our wide brim styles all offer Excellent Protection from the sun. Whenever you see the UPF 50+ Excellent Protection Logo you can rest assured the product complies with the AS/NZS 4399:2017 Sun protective clothing – Evaluation and Classification.

The Newcastle Hats purpose built facility also has the ability to custom make a variety of products from heavy duty cotton drill, leather, oilskin and other textiles. We can create lifting bags, machinery and equipment covers, satchels, duffle bags, boot covers, belts, carry bags, straps and much more – all 100% Australian Made.

The Newcastle Hats collection is owned and run by Vision Safe, a family business that has been located in Mundaring for more than 20 years. Vision Safe wholesales quality personal protective equipment throughout Australia and internationally – check out our website at www.visionsafe.com.au.

A wide range of these hats are available to purchase at our stand at the Perth Garden and Outdoor Living Festival, and are also available to order online at www.insideoutsafety.com.au

No matter what the weather, you can rely on a Newcastle Hat for best protection.

The Newcastle Hats collection includes some great waterproof hats that will take you through the rest of the warmer season and out into winter. Styles like the Durack and Outback Hats, with a special mention to the latest addition: the sophisticated and extremely durable Isa Hat.

The Durack and Outback Hats are manufactured using high quality, soft finish oilskin to provide protection from the elements, whilst the Isa Hat is made from premium canvas which is water resistant for your protection in all types of weather.

Safety supplies to suit every lifestyle.

Complementing our Newcastle Hats range, Inside Out Safety also stock a wide range of other products. We are a one stop shop for all your sun protection, personal protective equipment and gear, sourcing quality products from all around the world, to keep you safe and covered from tip to toe.

Why not check out our First Aid Kits, UVeto Australia hats and Derma Guard barrier cream while you're here?



Bowman Brush
Australian Brushwood Products

Sustainable fence panels & screens made from Western Australian grown brushwood.

Are you looking for an eco-friendly alternative for fencing and screening? Our range includes modern brushwood fence panels, screens, enclosures, and unique brushwood products. We offer custom sizing, DIY kits, and an extensive selection of accessories.

Enhance your home with a natural look

Lessen noise from roads or neighbours

Reduce your carbon footprint

Soften your backyard vista

Reduce urban heat island effects

Garden friendly fencing

Visit our Bowman Brush stall at the Perth Garden & Outdoor Living Festival

GET IN TOUCH TODAY!

PHONE 0458 251 261

EMAIL bowmanbrush@bigpond.com

WEBSITE bowmanbrush.com

FACEBOOK BowmanBrush
INSTAGRAM @bowman_brush

WA INSTALLATION PARTNERS:

Brian's Brushwood Installations:
0488 959 749

Westlink Fencing and Gates:
0457 741 776

BJ Mitchell Garden Services:
0423 946 064

Treacy Fencing and Landscaping:
(08) 9409 9022



WE SAT DOWN
DEMPSTER, THE W
WHISPERER FRO
WILDFLOWER GA
GET A BET
UNDERSTANDING
UNIQUE ABILITIES
NATIVE GARDEN
THAT SUIT THE
GARDEN

We sat down with Sue Dempster, the Wildflower Whisperer from Western Wildflower Gardens, to get a better understanding of her unique abilities in creating native garden designs that suit the home gardener.

As the Wildflower Whisperer and expert in WA wildflowers, how did you get started and what's it about?

My grandmother, Eileen Croxford was a florist who admired the beauty and shapes of wildflowers whilst my mother, Hazel Dempster has spent most of her life conserving WA natives through propagation. After growing up around such dedicated, amateur botanists, I quickly learned the importance of connecting to Country through our native flora.

I realised I have a story to share about adding the magic back into our gardens. After years of working on landscapes for local governments, industry and developers, it became very clear to me what worked for WA native landscapes. Home gardens are simply a smaller version of these larger landscapes.

Every home garden I design is filled with all year round colour using new methods featuring WA wildflowers, all specially selected to suit home gardeners and their lifestyles.

Everyone talks about four seasons, but I've heard you work with six - how come?

European settlement introduced the idea of four seasons around 200-years-ago. Ever since then, all our gardening and horticultural practices have been set around summer, autumn, winter, and spring.

When being on Country in WA with Mum and Nanna, it was clear that every two months the seasons were changing. Although we didn't know of the six seasons then, we recognised the mismatch.

Understanding the flow of our six Noongar seasons in WA is an asset to any home gardener. It provides the opportunity to learn about the various patterns exhibited by our native flora and fauna across the year.

It also ensures we get colour in our home gardens throughout the year rather than just over spring. This is critical in supplying food to our local insects and small birds.

I've set my native garden up with irrigation, mulch and other additives but it just isn't thriving, do you have any advice?

We know your soil is already perfect for wildflowers. Using automatic irrigation, thick mulch and various soil conditioners is like adding sugar to all your food. It's unnecessary for our wildflowers and is unhealthy for our local fauna.

I recommend using the existing soil, choosing the right plants, deep stem planting, hand watering and encouraging the growth of an ecosystem in the garden to start a thriving wildflower garden.

You said our soil is perfect but all I see is dry, sandy dirt - what am I missing?

WA gardens are all a combination of sand, clay or loam in differing proportions, all with naturally low levels of nitrogen and phosphorus. For wildflowers - this is the soil mix of their dreams and is the main reason natural native gardens produce such vibrant, seasonal colour.

I teach gardeners how to work with their natural soils and understand the water, root and soil relationships over the six Aboriginal seasons. This allows them to learn about their plants behaviours, the birds and the bees visiting their gardens.

Any final tips?

Yes! Contrary to popular belief, planting your wildflowers in the warmer months of the year is actually the best time. The days are longer, the earth is warmer and as long as you can do some hand watering, you'll have a WA wildflower garden jumping out of the ground with growth in no time.

Green Earth

ENTERPRISES PTY LTD
YOUR COMPLETE STEEL EDGING SOLUTION



GREEN EARTH ENTERPRISES ARE THE WA DISTRIBUTORS OF FORMBOSS STEEL GARDEN EDGING.

WE TAKE PRIDE IN BEING ABLE TO ASSIST DESIGNERS, TRADE AND RETAIL CLIENTS WITH THEIR GARDEN EDGING AND CUSTOM METAL FABRICATION.

Unit 3/72 Solomon Road, Jandakot WA 6164

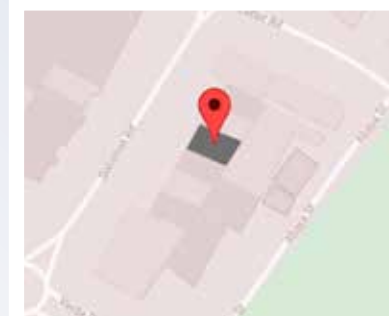
PH: 9414 8119

sales@greeneearthenterprises.com.au

Facebook – FormBoss WA – Green Earth Enterprises

Instagram – [greeneearthenterpriseswa](https://www.instagram.com/greeneearthenterpriseswa)

www.greeneearthenterprises.com.au





SOIL SOLVER THE ANSWER LIES IN THE SOIL

Two things remain irretrievable: time and a first impression.

The foundation for a garden is as important as the foundations of your house. Visitors take lasting impressions of your home in an instant. The quality of the soil makes the difference between an easy to care for, beautiful garden, and one that is constantly struggling, especially in the hot dry conditions of summer.

Your garden is an integral part of your home environment. Your senses automatically react to visual, aroma and atmospheric stimuli. Coming home to a healthy, peaceful, colourful garden with the cooling effect of a moist lawn impacts on how you respond to your home and family.

You can have a water-retentive, pest and weed controlled garden by setting the foundations of the soil first. The answer isn't continuous additions of fertiliser and compost – the answer lies in the soil. It is the soil which needs amendment.

Perth's mineral-poor sandy soils are hydrophobic causing water to run-off taking any goodness out of the soils and into the river systems. By making a permanent change to your sandy soil with Soil Solver® Clay Plus Minerals, you will gain a water-retentive, money saving rich loam soil.

We have all heard that clay is an essential ingredient in a good soil. The issue is which clay? They are not the same. Bentonite is a Montmorillonite clay used as a liner for dams as it attaches to itself forming a solid layer which repels water. It may assist in your garden for a few months because of added fertiliser and compost but in a short while the soil will return to its original sandy state.

UWA and the Agricultural Department trials have shown that Kaolin clay is the best clay for holding moisture as it binds with the sand particles and humus creating a fertile loam type of soil which holds moisture and nutrients.

Soil Solver® uses a high-grade Kaolin clay which

meets the strict Australian Standards of 2 microns; that means it is smaller than the sand particles. This unique strain of Kaolin Clay is buried deep in WA's Great Southern and is the only clay on the market that can boast a 50% Clay chemistry. Blended with silt and the complete suite of rock minerals needed for plant health, Clay Plus Minerals is a permanent, certified Organic Allowed Input soil amendment holding nutrients and moisture negating need for wetting agents and greatly reducing seasonal supplements.

Farmers have known the benefits of Kaolin clay for decades. Soil Solver® creator, Gavin Davis, has a 120-year family farming history and learnt the importance of mineral balance to enhance the properties of the Kaolin clay which he spread on his paddocks. After studying soil science under Neil Kinsey, Gavin took on Perth's sandy soils by creating Clay Plus Minerals. That was 11 years ago; the first gardens blended with Soil Solver® are still going strong benefiting from the permanent addition of clay and rock minerals.

Adding solely carbon into soil, the carbon breaks down to an alkaline oily wax which coats the sand particles and causes water repellent



soil. This is known as "hydrophobic sand" resulting in even less water-holding capacity. So, whilst carbon input can have an immediate take up of plant available nutrients it is transitory and can be detrimental to the soil and environment unless it works in the natural partnership of minerals and carbon.

Our soils are missing the trace elements which are needed for all plant and human health. Fifteen minerals are needed for plant growth and fifty more minerals are required for optimum health for the plants that animals and humans consume. Clay Plus Minerals contains the equivalent of a bag of rock minerals.

In short, the role of carbon is to release the minerals for plant uptake. Without the minerals, carbon cannot do the job that nature intends. It's like sending a child to school without any teachers.

For use for lawns, garden beds, pots and trees, Soil Solver® recommends 10kg per sqm of Clay Plus Minerals blended into the soil with 5 litres per sqm of good mature compost. These components will work together to give you a permanent change and giving you greater time to just sit and enjoy.

Soil Solver® will be at the Perth Garden Festival. Bring your photos or even a sample of your soil and Gavin will give you personal, professional advice on how to solve your sandy soil dilemma.



Sioux Christiansen
Business Manager

Soil Solver Pty Ltd
M 0447 598 451

TUCKER BUSH™

A Range of Australian Native Plants
with edible fruits, nuts, seeds, roots and leaves.

tuckerbush.com.au

f o

THE WEST WINDS
PREMIUM AUSTRALIAN
GIN

**JOIN US FOR A GIN MASTERCLASS
OR PURCHASE A PRESENT
FOR MOTHERS DAY**

LEARN MORE AT
www.thewestwindsgin.com

Proud sponsor of the 2021 Perth Garden and Outdoor Living Festival




replants.com
save grass trees • share culture




Scan this QR code for more information.

[f](https://www.facebook.com/replants.com) [i](https://www.instagram.com/replants.com) [y](https://www.youtube.com/replants.com) [p](https://www.pinterest.com/replants.com)

richgro.com.au

RICHGRO
Bring your garden to life

PERTH GARDEN
& OUTDOOR LIVING FESTIVAL
PRESENTED BY **Kleenheat**

Great Activities at the Richgro Main Stage

MEET Charlie Albone!

GROW YOUR OWN

LEARN To GROW YOUR OWN!

FREE Kids Potting Activity!




Daily seminars
by top gardening
experts!

Buy your
favourite Richgro
products at the
festival!





WHY GROW BUSHFOOD IN YOUR BACKYARD?

WITH TUCKER BUSH

The real question is: why not?

Native bushfood has soared in popularity in recent years. What was once a largely ignored outback quirk has risen to remarkable heights of prestige in the fine dining scene. And it's great news! With Tucker Bush taking pride of place in Australian cuisine, they not only become more available to a curious and hungry public, but we also see the preservation of rare and curious species found only our sunburnt country.

Everyone benefits from today's bushfood movement. Whether you identify as a foodie, a green thumb, or a part of the local wildlife, there are many reasons why now is the perfect time to plant an edible native in your backyard.

A TRULY AUSTRALIAN FLAVOUR

Native edibles bring truly unusual flavours and textures to recognisable dishes. Like Bush Basil, for example, also called the "Five Spice Plant" for its complex aroma. Used in place of sweet basil, it can add greater depths of flavour to salads, pizzas and pesto sauce. Among other native favourites are the Youlk (a bush potato that tastes more like a carrot) known for its apple-like texture and hints of eucalypt; Muntries, a sweet and spicy berry that may be used in place of currants; and the very popular Midyim Berry, a sweet and tangy blueberry-like fruit that tastes like gingerbread.

While some native edibles may have similar cousins overseas, the species specific to this region evolved and adapted under our unique environmental conditions, and can only be found in Australia. Such niche availability means there's a lot the world has yet to learn about these plants. Researchers are only just beginning to discover the immense nutritional and medicinal potential of some of our native species. With new findings constantly coming to light, who knows — that humble Aussie herb in the corner of your garden could well turn out to be the next big superfood.

GOURMET INGREDIENTS AT YOUR FINGERTIPS

Although bushfoods have become more commercially available over the years, it's still not common to see the likes of red and yellow Finger Limes at the local supermarket. And good luck finding Murnong Yam to serve with your next Sunday roast — those coconutty tubers are even harder to get hold of.

We're so often at the mercy of the market, which can mean waiting years for even the most prolific wild vegetables to show up in stores. And because many bushfoods can so easily substitute conventional ingredients, it's an even bigger shame when we're forced to miss out.

Here's where garden enthusiasts, homesteaders and "kitchen witch" types have a distinct advantage. Nursery-grown native plants, specially selected for taste and ease of growing, are already available in WA and throughout Australia, putting these still somewhat 'rare' ingredients very much within reach.

A NATURAL EXPERIENCE

Growing your own food can be a therapeutic and satisfying experience for everyone. For young kids especially, an edible garden can help them develop "nature smarts" from an early age. They won't even realise they're learning, as they absorb working knowledge about plants, water, soil, bugs and — most importantly — where their food comes from.

By and large, the world is increasingly recognising the social, health and environmental benefits of living with plants. According to the 2020 Plant Life Balance Trend Report, Google searches of "native plant nursery" have increased by 44% in Australia over the past five years, while 2019 saw 18 million Australians purchasing a plant (or more) for their home.

It's no wonder, given that studies have revealed gardening to be an excellent way to practice mindfulness, manage stress, and even help relieve symptoms of mental health issues. More and more people seem to crave that stronger connection to nature that their garden can offer.

GETTING BACK TO OUR ROOTS

While it might not seem like it on the surface, choosing to grow a native bushfood plant alongside your exotics taps into centuries of local culture that mainstream folk have yet to catch up with.

Aboriginal tradition covers a wealth of knowledge — new and old — about the land we live on, knowledge that helped generations upon generations of their ancestors thrive in harmony with this harsh environment. Translated to English as "connection to country", this vital aspect of Indigenous culture recognises how much all of us depend on nature, and how much nature depends on us.

By planting just one Tucker Bush in your backyard, you become part of a greater cultural shift that contributes to this country's cultural and ecological diversity — whether you stop at just one native berry bush or embark on a long and colourful Australian journey.

#TuckerBushPlants



OUR SOILS, OUR CLIMATE, OUR ECOSYSTEM

Last year, bees were declared the most important species on Earth. In Australia alone, there are around 2,000 species of native bee, many of which have co-evolved with our native flora and are only capable of foraging on those plants.

Thinking "native first" when it comes to the garden ensures endangered Australian bee populations don't get shut out of their native habitat. You'll have all bees covered when you plant native flowers, even the exotic honeybees, which aren't endangered at all and can forage on a much wider variety of plants.

Beyond bees, growing native edibles come with myriad other garden benefits. Not least of which that these species are acclimated to our soils and climate, making them far easier and more convenient to grow than their thirstier, fussier counterparts.





BOUGAINVILLEAS YOU CAN HANDLE

Bambino® Bougs - the new breed Bougainvilleas that you can handle... without the tears.

Perfect for your small garden - hardier, friendlier and richer than any other Bougainvillea!

Now, friendlier bougainvilleas that are fantastic for your landscaping and small garden needs. It all began in the 1980's...

Passionate bougainvillea lover and Brisbane nursery woman, Jan Iredell, made the decision to dedicate her time to specifically breed and grow dwarfed and more compact bougainvilleas... ones with all the colour and pizzazz of traditional bougainvilleas but with less harmful thorns. Specifically too, Jan was after a smaller and more compact plant but just as hardy.

The result was the introduction of Bambino® Bougs and recently Babybino® Bougs that are brilliant ground huggers. Jan Iredell says: "I have always loved bougainvilleas. Their amazing brilliant colours and their hardiness made me feel they were a plant that outshone most others. The biggest downside with ordinary bougainvilleas is that they are not friendly plants. They have large hurtful thorns and pruning them to shape and size is a big issue."

I felt that with a specific breeding program, these problems could

be overcome. The result is, I am delighted to say, is the 'Bambino' range. Recently we also introduced the 'Babybino' range, which are wonderful ground huggers.

Both the Bambino® range and the Babybino® range are a much more accessible, friendlier bougainvillea for every gardener and landscaper. They have maintained the rich vibrant colours, hardiness and are water wise once established. It has been a constant joy to watch my dreams come to fruition and I hope gardeners everywhere will love them as much as I do".

If you are like most green thumbs, your understanding of Bougainvilleas were that they were plants that overgrew quickly with lots of thorns and were too hard to handle in regular gardens and on the smaller allotments of cities of today.

Jan Iredell's journey to create the best Bougainvillea possible has been meticulous. Her knowledge and experience of the Bougainvillea family is extensive from her time living in the tropics, particularly Papua New Guinea for many years.

Once collection and selection of 'favoured parents'

was done she set about growing and evolving the new breed of bougainvilleas. This took her through the 1980's growing varieties in her own home garden...

Mid 1990's and Jan released her first selections... Jan was ready! With her well documented book launch, she released the first few of the new plants to the Australian market. Once gardeners saw the results of the new varieties in their gardens the Bambino Bougs story was off and running.

Since then, Jan has released many new varieties and the new ground huggers that are set to be extremely popular.



Enter the draw to WIN \$500!

Perth Garden Show Special
29th Apr – 2nd May 2021
Visit Stand #108

Visit the Straightcurve® stand at the Perth Garden Show to take advantage of this **Special Offer!**
Visit us at **Stand #108** and WIN! T's & C's apply.



straightcurve®

Level up your landscaping game with our garden edging products! Tackle any project with steel garden edging, retaining and planters! The possibilities are endless.

www.straightcurve.com

HeartSpace Gardens

Gardens to Heal Your Heart

*Creating unique and
meaningful gardens
for healing the heart,
easing the mind,
and soothing the soul.*

www.leesahart.com

E: leesa@leesahart.com

M: 0404 654 088

DO YOUR PART: SUSTAINABLE FENCING WITH BOWMAN BRUSH

With worldwide attention on environmental sustainability and reduction of carbon emissions, it makes sense to choose eco-friendly products for your home to do your bit for the environment.

Bowman Brush is WA's premier supplier of sustainable, 100% plantation-grown brushwood fence panels and screening products. Their range includes distinctive, modern brushwood fencing solutions, unique brushwood products, custom sizing, and DIY kits. They also offer an extensive selection of accessories, including Colorbond® framing, decorative features, and various capping options.

The company's brushwood fence panels and screens are suitable for residential applications through to large-scale commercial developments. Their products are used extensively throughout Australia by homeowners, commercial developers, housing estates, holiday resorts, caravan parks, and zoological parks, to name a few. The products are so versatile they can be used for virtually any fencing or screening application.

Bowman Brush's range of brushwood products offer practical and affordable solutions to dress up the appearance of your outdoor area or cover up your unsightly standard fencing for a more natural look and feel. They are perfect for hiding your shed, clothesline, pool pump or other items that detract from the look of your yard.

Hayley from Bowman Brush says, "Our brushwood panels do a great job at reducing glare from light reflecting off your fence and are excellent at reducing the heat-pool effect in your yard, synonymous with Colorbond® and Super Six fencing." Hayley also says, "The fence panels make excellent sound insulators; just what you need if you live near a busy road or if you simply want to shield yourself from noisy neighbours."

SUSTAINABLE SOLUTIONS TO PROTECT THE ENVIRONMENT

Bowman Brush is all about sustainability and they are proud to be the only brush fencing manufacturer in Australia using exclusively plantation-grown brushwood. The Bowman family owns an 1100 acre property in the Western Australian Wheatbelt region, where they grow the melaleuca brushwood used in their products. This particular type of plant is native to the area and flourishes in its natural environment, without the need for irrigation or dangerous pesticides and herbicides.

A positive side-effect of the Bowman Brush plantation is that it helps to lower the underground water table in the area, reducing surface salinity in the surrounding salt-prone soils. The plantation also provides a sanctuary for native wildlife in a predominantly broadacre farming region. The team also has an ongoing seedling program to expand brushwood growth in their plantation.

SIMPLE TO INSTALL, EASY TO MAINTAIN

If you are an avid DIYer, Hayley from Bowman Brush says it is possible to install the panels yourself. To help you along the way, the Bowman Brush website has useful

installation guides, with detailed step-by-step instructions. Alternatively, if you are not DIY inclined, for the best results Hayley recommends having the panels installed by one of their installation partners. When installed correctly, the panels will not rot or sag and, being termite-resistant, they will remain structurally sound and pleasing to the eye for years to come.

Hayley says their brushwood panels naturally change colour as they cure over the first year after installation. From there, the colour will settle and retain its look for the lifetime of the product. Keeping them looking good is as simple as preventing soil build-up on the base of the panels and replacing the rolltop capping every 10-12 years. For those looking to revitalise the panels further, a quick spray with a 50/50 solution of linseed oil and turpentine once-a-year does the job nicely.

Look out for Hayley and the Bowman Brush team at the Perth Garden & Outdoor Living Festival from 29 April to 2 May 2021. To learn more about Bowman Brush, view their range of products, or find out about their installation partners, visit their website at www.bowmanbrush.com or call Hayley on 0458 251 261.

A PASSION FOR QUALITY

The team at Bowman Brush love playing with sticks. Each brushwood panel contains hundreds of individual sticks, with each one harvested, bundled, dried, then woven and compressed to become part of the final panel. For peace of mind and quality you can rely on, only the highest quality brushwood makes it into the final product.

The manufacturing process involves tightly compressing brushwood sticks to create dense solid panels, which are held together firmly with either heavy-duty galvanised wire, or stainless steel wire for added longevity or seaside applications. The Bowman Brush team developed and manufactured their own machinery to ensure a consistent level of quality in the creation of their products. Their state-of-the-art machinery and production techniques allow for custom sizing and unique designs, including cut-outs and decorative metal inserts within the panelling.



St. Clements Roses

**EARLY BIRD SPECIAL
10% DISCOUNT FOR CASH
STORE WIDE BEFORE MIDDAY.**

DELIVERY AVAILABLE \$20

WWW.STCLEMENTSROSES.COM | SITE NUMBER 16

WATERWISE GARDEN WATERING

Drought and water restrictions have shown us that water is a scarce and precious resource. Despite this, it is possible to achieve a thriving and waterwise garden by ensuring your plants and lawns receive the correct amount of water.

SPRINKLER TYPES

It is important to remember that different sprinkler types have differing watering rates. Lawns & gardens need a minimum of 10mm water, twice a week to survive the summer heat. If your plants die, any water applied is wasted water! The following graphic can be used as a guide to apply a standard drink. If you are unsure of which sprinkler type you currently have OR need help with your irrigation system, contact your local Waterwise irrigation professional for advice. Search the Waterwise Irrigation Directory at www.waterwiseprograms.com.au to find your nearest Waterwise Professional. Ideal sprinkler runtimes are also determined by soil type and the water requirements of your plants.

KNOW YOUR SOIL TYPE

Soil types across Western Australia vary greatly. Clay soils feel sticky, hold moisture for long periods but can become compacted and absorb water slowly. Sandy soils feel gritty, are thirsty and will take in a lot of water, but they dry out quickly. Loam is the ideal soil type with roughly equal portions of sand, silt and clay. In general, Perth's coastal soils are sandy, and benefit greatly from soil amendments (such as clay) and wetting agents to improve water and nutrient holding capacity.

UNDERSTANDING YOUR PLANTS

The rate at which plants lose water through transpiration varies with the type of plant and location. If possible, choose low water use plants suited to your conditions and group plants with similar water needs (hydrozones), so you can water different parts of the garden differently, e.g. annuals, vegetables and pot plants may need shorter, more frequent watering by hand.

MILLIMETRES, NOT MINUTES!

The local weather station reports how much rain has been received in millimetres, not minutes. 1mm of water (applied either by rain or irrigation) = 1 litre of water applied evenly to 1m² (but 1mm of water applied to the soil's surface will soak in further than 1mm). The roots of most plants are located within the top 30cm of the soil. For Perth's generally sandy soils, a 10mm "standard drink" per watering day is sufficient to ensure water is readily available for the plant's roots. Overwatering may cause excess run-off or water to penetrate below the rootzone and be wasted.

CATCH CUPS TO MEASURE A 10MM STANDARD DRINK

You can measure how long each sprinkler station takes to apply a 10mm standard drink using catch cups. Catch cups are available from Waterwise Irrigation Design Shops while stocks last.

A FEW THINGS TO REMEMBER:

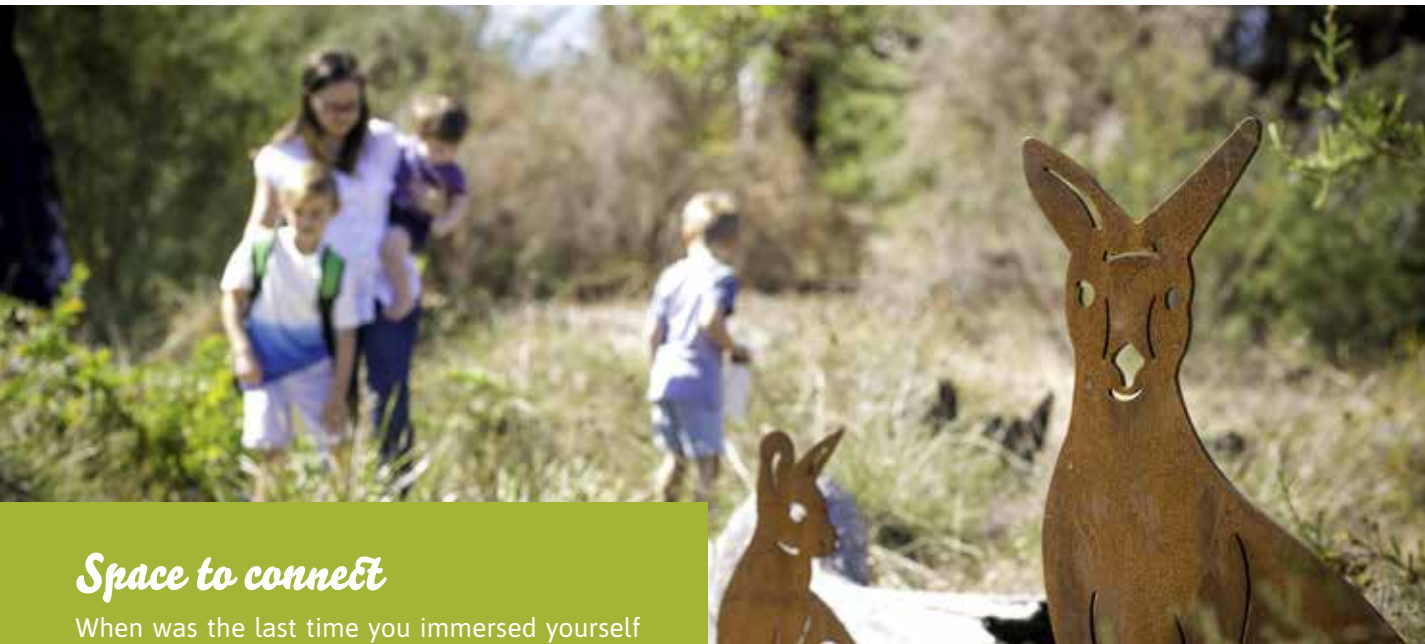
- Watering before 9am allows plants to use water throughout the day
- Check and maintain your irrigation system regularly
- Don't mix different types of sprinkler on one watering station
- Always replace like for like when replacing broken sprinklers
- For professional advice, contact your local Waterwise irrigation professional – www.waterwiseprograms.com.au
- Seasonal adjustments should be made to sprinkler run times outside of Summer months – see table below
- Remember to turn off your sprinklers if rain is forecast

Sprinkler Watering Run Times					
<p>It's important to remember that different types of sprinklers have different watering run times. The table below can be used as a guide if you need to program your controller.</p> <p>Approximate watering rate (per hour)</p> <p>Suggested run time to apply 10mm standard drink (for sandy soils)</p>					
	DRIPLINE	MICRO SPRAY	POP UP UREA SPRAY	ROTARY	GEAR DRIVE ROTARY
	15-20mm	35-45mm	35-45mm	10-15mm	10-20mm
	30-40 minutes	13-16 minutes	13-16 minutes	40-60 minutes	30-40 minutes

Month	Seasonal adjustments
JAN-FEB	100%
MAR	80%
APR	60%
MAY	Manual operation of controller as necessary
JUN-AUG	System turned off (winter sprinkler ban)
SEP	Manual operation of controller as necessary
OCT	60%
NOV	80%
DEC	90%

TAKE TIME TO EXPLORE

Whiteman Park



Space to connect

When was the last time you immersed yourself in Western Australia's native bushland?

Located in the midst of suburbia, at Whiteman Park you can see kangaroos grazing, wedge-tailed eagles soaring high, goannas basking in the sunshine and wildflowers blooming throughout the year. Photographers, birdwatchers and wildflower enthusiasts can rejoice in the opportunities to see these and more in this biodiversity hotspot.

One of the biggest remaining tracts of Swan Coastal Plain banksia woodland is in Whiteman Park. More than half of the Park's 3,700 hectares is natural banksia woodlands and melaleuca damplands, making it a significant conservation reserve and a haven for 100-plus animal species, along with scores of migratory birds.

Whiteman Park's bushland isn't its only feature; it also offers over 150 hectares of leisure facilities so visitors can enjoy an extensive range of activities and attractions, with several wildlife experiences on offer.

Walk among wildlife

The ever-popular Caversham Wildlife Park is located within Whiteman Park and is home to over 200 of Australia's unique native animals, including koalas, wallabies, possums, Tasmanian devils and wombats. Visitors can hand-feed kangaroos and get up close to some Australian icons at daily shows and talks.

Woodland Reserve, the Park's premier conservation facility, is helping to preserve the critically endangered woylie (or brush-tailed bettong, *Bettongia penicillata*). Guided Nocturnal Woylie Walks offer the chance to see these small mammals up close on an evening tour when they, and their fellow nocturnal natives, are most active.

Three bushwalk trails give visitors the chance to truly immerse themselves in nature and offer the best places to see wildflowers and waterbirds. Each trail encompasses a different and valuable facet of the Park's bushland, and each transforms throughout the seasons, allowing you to enjoy these bushwalks any time of the year.

And for the kids? You can't go past the Whiteman Park Children's Forest. Planted by children and their families over 18 years, the Children's Forest is a place where children are encouraged to explore, enjoy and discover the many wonders of the Forest. It is also a place where they can learn about the importance of and connect with the beauty of Western Australia's native bushland.

You can of course explore beyond these areas as well and you could be lucky enough to spot any of an assortment of wildlife while you are out and about. Quendas are regularly sighted around Mussel Pool and in the Children's Forest, and wild kangaroos graze on the edges of the picnic areas at either end of the day. There are plenty of birds and reptiles as well, so keep your eyes open.



Plenty to do

If walking is not your thing, there are plenty of other options to reap the benefits of time in nature at Whiteman Park, by exploring the many attractions and facilities on offer. There is a craft village, dog park, four playgrounds (including the all-abilities Pia's Place nature playspace), cafes and much more. You can immerse yourself in history aboard a vintage train or heritage electric tram ride (while looking for kangaroos, of course!), and there are also three museums to explore: the Motor Museum, Tractor Museum and Revolutions Transport Museum.

Green Spaces reduce stress

While you can do all this and more, you can simply pack a picnic and enjoy the Park's expansive green spaces with family and friends or take a gentle stroll to listen to the sounds of the bush. It could be just the antidote to stress you need. A study in Finland found that after spending just 15 to 45 minutes in a park or forest, people's mood, vitality and creativity improved enough to leave them feeling restored.

On the doorstep of the Swan Valley, Whiteman Park is located just 30 minutes from the Perth CBD. Whatever you choose to do, why not take some time out and connect with nature. There's nothing quite like exploring in the fresh air – just think how good you will feel after a day at Whiteman Park!



St. Clement's Citrus

Trees for our future

"WE KNOW IT, WE GROW IT"

EARLY BIRD SPECIAL
10% DISCOUNT FOR CASH
STORE WIDE BEFORE MIDDAY.

DELIVERY AVAILABLE \$20

223 ADELAIDE STREET HIGH WYCOMBE | SITE NUMBER 16

Greening WA with native plants has never been easier.



Native plants delivered to your door.
Visit nativ.com.au.

nativ
by Plantrite

Is your garden in the hands of our experts?

Our members are committed to the importance of healthy plants and the growth of gardens in our landscape.

NGIWA
Retail and online members
>>



- A**

Apace Aid (Inc)
Aquaponics WA & Hydroponic Xpress
Arborwest Tree Farm
Australian Native Nursery
Avonova Farms

B

Boyanup Botanical

C

Chorus
Citrees Nursery
Coast Road Palms

D

Dawson's Garden World

E

Ellenby Tree Farm Pty Ltd

F

Fickle Prickles
Fruit Tree Man

G

Garden Elegance
Geographe Community Landcare Nursery
Grasstrees Australia
Guildford Town Garden Centre

H

Hortbiz

I

Ideal Plants Nursery (Affiliate)
- K**

Katanning Environmental Nursery

L

Lakeside Nursery
Leschenault Community Nursery Inc.

M

Melville's Rose n Garden
Miaflora Garden Centre
Misty Ridge Plant Farm
Muchea Tree Farm

N

Native Plants WA

P

Perth Hills Veggie Co Pty Ltd

S

Seed Station
Strike Me Pink (Affiliate)
Supreme Plants

T

The Green Life Soil Co.
The Wetlands Centre Cockburn (Associate Member)
Tim Eva's Nursery
Trillion Trees
Tulips With A Difference

Z

Zanthorrea Nursery



Nursery & Garden Industry
Western Australia

www.ngiwa.com.au

NGIWA supports and represents businesses that commercially grow and retail plants or supply related products and services.

PO Box 9067 Nicholson Rd, Subiaco WA 6008
reception@ngiwa.com.au | 0419 930 008





GREEN IS HEALTHY

Matthew Lunn | Executive Officer NGIWA



Gardening has always been a part of our daily lives but when Covid-19 struck last year, it became one of the few success stories from the pandemic.

Garden centres and nurseries were being stripped of plants and associate products. Green was the talk of the town.

Gardening has always been readily and easily accessible and for the majority of us, it was only when we first ventured out of home that we were faced with the so-called patch of dirt and the desire to add a bit of greenery to make it our own.

Sadly, for many our lives become busier with work, family and leisure commitments and our time in the garden quickly gets postponed to merely an occasional weed and mow on the odd weekend.

Certainly, gardening has evolved and increased in popularity over the past ten years or so thanks to reality tv programs

such as Better Homes & Gardens, Gardening Australia and even The Block on our screens each week. Living and gardening are now synonymous with one another and continue to inspire what we eat, what we grow and how we can live a very healthy outdoor lifestyle.

In Western Australia, we have the perfect climate to embrace outdoor living and to incorporate gardens within the home space. This is demonstrated with more outdoor 'rooms' being added to our living areas.

Gardening is more than just plants and as recent events have taught us, many who went through lengthy periods of lockdown around the world, grappled with emotional and mental health issues and general well-being – from being locked inside and away from gardens.

Gardening was and will continue to prove that it is the perfect tonic to de-stress, become motivated and build self-esteem.

Even fitness benefits are evident for enjoying a healthier life.

I have gardened for over 40 years and I honestly can't function if I haven't had time out in my patch. It provides some 'me time' to reflect on work and family. I can also take my body out of high gear and drop it into neutral very quickly. In other words, my brain is allowed to be void of troubling issues faced every day, and I can spend quality time in my garden nurturing my plants to reach their potential. That provides not only self-satisfaction, but puts me in touch with nature; the reality of knowing that everything has its place and co-exists together.

What have been the significant changes in gardening trends?

In recent years, succulents received the golden gong, but it has been the indoor plant movement that has shaped the way we garden today.

When a room looks dull and

uninspiring, a splash of green is the go. Biophilia design in homes has introduced things such as botanical wall papers and the gelato colour palette to uplift our mood.

Early on, traditional indoor plants were what we were used to having, but more recently we are seeing the evolution of natives and edibles planted into pots for home interior design.

With more and more plants being grown, there does come a significant problem. How do we care for them properly - as let's be honest not all of you have green thumbs.

We all know about water, we've heard about fertilisers and it's not a bad idea to prune regularly, but growing plants is way beyond that. Take indoor plants; understanding light, room temperature and even dry air or drafty conditions can affect the growth of a plant, and what might seem to not do so well in one room may in fact thrive in another.

At this year's show, we have a variety of experts on hand to lead you in the right direction.

At the Waterwise Hub situated near the main nurseries, you can 'Meet an Expert' as part of our Waterwise Gardening promotion. The term Waterwise is a gardening catchphrase here in WA and although we know local endemic natives are always a safe bet for success, the growth of plant breeding has meant we have a larger selection to choose from in our arid climate.

A visit to the Hub will also allow you to see sample Waterwise gardens suitable for coast, verge and inner city living and gives you an opportunity to collect informative brochures to help with design ideas using this sustainable approach.

On hand, also will be the team from Water Corporation to offer further advice on the various Waterwise programs and initiatives that help support a healthier and

more sustainable place in which we live.

If you are looking for professional landscaping advice, then head to the Landscape Industries Association (WA) stand (Show Gardens) and 'Meet a Professional'. Booking times are available online to secure a one-on-one consultation, or alternatively visit the stand to meet an association member and collect useful information to help you select a qualified landscaper for your project.

Gardening is here to stay but it is also here to change our lives. Home gardens will become friendlier and greener, you will see a continued push to make urban development incorporate parks and recreational green spaces. And just as importantly, our cities will begin to grow from a traditional hue of grey to green. Green is the perfect health-kick for the future.

We find the best, so you don't have to.

RAC Home Repair & Maintenance

We know their workmanship and you know our customer service

- » No call out fee
- » 12-months guarantee* on all repairs
- » Access a wide range of home repair services through our on-line booking system
- » A dedicated customer support team available 24 hours, seven days a week

Members save
10%
off labour*
The power of
membership

Book online at rac.com.au/homerepair
or call 1300 655 057

*Terms and conditions apply



Home Services
For the better

Kleenheat Kitchen



Potsticker Pork Dumplings

Serves 2 (makes 30 dumplings)

Ingredients

Wrapper

300g plain flour plus 150g more for dusting
200ml boiling hot water
1/2 tsp salt

Filling

300g pork mince
1/2 tbsp sesame oil
1 tbsp Shaoxing wine
2 tbsp soy sauce
1 tsp ground white pepper
1/2 tsp bicarb soda
2 tbsp cornflour
1/4 bunch bok choy, finely diced
5cm piece of ginger, grated

Dressing

1/4 cup black vinegar
1/3 cup soy sauce
1 1/2 Tbsp sugar
1 - 2 Tbsp chilli oil

To serve

Pita bread rounds
1 x spanish onion, thinly sliced
2 x tomato, thinly sliced
1 x Jar Ajvar (red capsicum condiment)

Method

For the dumpling dough, combine the flour and hot water in a bowl and mix to form a soft dough using chopsticks. Turn dough onto a lightly floured surface and knead until smooth, cover and set aside to rest for 20 minutes.

For the filling, combine ingredients in a bowl and mix well. Set aside until required.

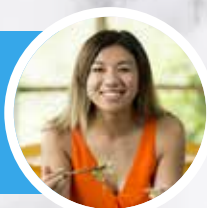
Roll rested dough using a rolling pin until thin. Using a round 8cm cutter, cut out dough into 30 rounds.

Place a teaspoon of pork mixture into the centre of a round, fold in half and press edges to seal. Bring the 2 corners together and press to seal. Repeat with remaining dough and filling. Set aside, in fridge, until serving.

To cook, Heat some oil in a large non-stick frying pan over medium heat. Fry the dumplings flat side down for about 2 minutes until a golden crust forms on the bottom. Add 2 cups of boiling hot water and immediately cover with a lid (or a heavy plate if your pan doesn't have a lid). Let the steam cook the dumplings for 6 minutes Remove the lid and let all the remaining water evaporate so the dumpling bottoms can crisp up again.

To serve, place dumplings onto a serving plate and dress generously with dressing. Can be garnished with thinly sliced spring onions and/or fresh coriander.

Watch **Jenny Lam** demo her recipes at the Kleenheat Kitchen on Friday 30 April.



Banh Xeo Vietnamese Crepes

Serves 4-6 (makes 12 crepes)

Ingredients

Crepes

1/2 cup sugar
1 cup coconut milk
2 eggs
1/2 cup cold milk
500ml cold water
1/2 tsp salt
1 1/2 tsp cornflour
1/2 tsp baking powder
250g rice flour
2 tbsp turmeric
5 spring onions, thinly sliced

Method

To make the batter, dissolve the sugar in the coconut milk. Crack the eggs into a large mixing bowl, whisk just enough to bring together the eggs, add cold milk, water, salt and coconut milk mixture. Whisk in your dry ingredients until well combined. Add the spring onions and let the batter rest on the bench for half an hour before frying.

For the filling, thinly slice all your mushrooms.

To fry your crepes, brush your pan with thin layer of oil, place it onto a medium heat. Add small handful of onions and mushrooms to the pan and fry until softened. Put enough batter to thinly coat the bottom of the pan (on a 30cm pan its generally 2/3 cup), swirl your pan to move the batter up and around the edges. Place a small handful of bean sprouts into the middle of the crepe and put the lid on. After one minute, take the lid off. When the edges of the crepe are golden brown, fold it in half and remove from the pan. To keep the crepes crisp and warm whilst you finish cooking the other crepes, set your oven to 70 degrees and pop them in the oven. Repeat until all the batter is finished.

Or keep remaining batter in the fridge and make more the next day. Read notes section if you do!

Dipping sauce

Crush the garlic and chili in a pestle and mortar, add the sugar and pour over the hot water and vinegar. Stir until dissolved. Add the lemon juice and fish sauce. Taste and add more fish sauce if you like your dipping sauce more savoury or more lemon to make it more sour.



Filling

1 large onion, thinly sliced
500g mushroom medley - oyster mushrooms, portobello, shitake
500g bean sprouts, washed

Dipping sauce - Nuoc Mam Chua

2 cloves of garlic
1 large chilli
1/4 cup sugar
1/4 cup hot water
1/4 cup vinegar
Juice of 1 lemons
4 tbsp fish sauce

How to eat it?

Serve with hydro lettuce leaves or mustard greens and fresh herbs. Banh Xeo is traditionally eaten as finger food. You grab a large mustard or lettuce leaf as a base, pinch a handful of pancake, pop it into the center of the leaf, add herbs, roll it up and dip it into the nuoc mam!

Gnudis with crispy, free range, Mount Barker Chicken

Serves 4

Ingredients

2kg ricotta
200g parmesan
2 tsp salt and pepper to season
2kg semolina
1 tsp nutmeg

Method

Mix ricotta, parmesan, salt and pepper and nutmeg.

Roll into 20g ovals.

Roll in semolina and neatly lay out in a semolina-filled tray, making sure the gnudis don't touch.

Leave for 12 hours or overnight turning half way through.

Salsa Verde

Blitz all ingredients in a blender, except the olive oil, which you will add slowly to control the thickness. You are looking for a bright green sauce that is thick enough to coat the gnudis.

To serve

Bring a tall stockpot filled with salted water to the boil

Drop the gnudis in and let them rise to the top, This will take about 3 minutes, - Gently spoon them out with a slotted spoon, making sure to let any excess water drain off and place into a metal bowl.

Coat the gnudis with the salsa verde and some roasted cherry tomatoes then place in a bowl.

Add some crispy skin, roasted chicken thighs or crumbed chicken schnitzel and you're away!



To make zucchini pickle

Thinly slice the courgettes using a sharp knife, mandolin or slicing blade on a food processor. Put in a bowl with the shallots and sprinkle over the salt.

Cover with ice-cold water, stir to dissolve the salt and leave for 1 hr. Drain the courgettes thoroughly and pat dry using kitchen paper or tea towels. If they stay too wet, the water will dilute the pickling solution.

Meanwhile, put the pickling ingredients into a pan and bring to a simmer. Bubble for 3 mins, making sure the sugar has dissolved, then leave to cool until warm but not hot. Add the courgettes and stir.

Scoop the mixture into 2 x 500ml sterilised jars (see below to find out how to sterilise a jar). Seal and leave for a few days in the fridge. Kept chilled, these will keep for a couple of months.

Pulled Dandaragan Organic Beef Short Ribs with pickles & yogurt flat bread

Serves 4

Ingredients

Short Ribs

1.5 kg Dandaragan Organic Beef short ribs
1 tsp cumin powder
1 tsp smoked paprika
1 tsp sea salt flakes
1 tsp mustard powder
1 tsp fennel seeds
1 tsp cracked blacked pepper

Basting sauce

1/2 cup tomato sauce
1/4 cup brown sugar
2 tbsp apple cider vinegar
1 tbsp worcestershire sauce
1 tbsp American mustard
1 tsp ground paprika

Yoghurt flat breads

200g plain flour, plus extra for dusting
1tsp baking powder
200g greek yoghurt
1/2 tsp sea salt

Zuchini Pickle

500g courgettes
3 shallots, finely chopped
2 tbsp non-iodised salt

For the pickling liquid

500ml cider vinegar
140g golden caster sugar
1 tsp mustard powder
1 tsp mustard seeds
1 tsp celery seeds
1/2 dried chilli, crumbled
1 tsp ground turmeric

Method

Preheat a covered BBQ on low, or if using an oven heat to 150c, pat ribs dry and place in a shallow roasting pan.

Combine paprika, sea salt flakes, cumin, fennel seed, mustard powder and pepper in a bowl and coat both sides of the ribs.

Cover pan in alfoil and roast in a covered BBQ using indirect heat, or in the oven for 3 hours, until the meat is very tender.

To make BBQ sauce:

Combine vinegar, sugar, mustard, tomato sauce, Worcestershire sauce and paprika in a saucepan, stirring and simmering for 5 minutes or until it thickens slightly.

Uncover the ribs and brush both sides, cook uncovered in the BBQ or oven for another 20 minutes, basting with any left over sauce.

To make yoghurt flat breads

Put all of the ingredients into a food processor and pulse until the mixture forms a ball.

Tip the dough out on to a clean work surface dusted with flour and knead for a minute or so, to bring it all together.

Put the dough into a flour-dusted bowl and cover with a plate. Put to one side to let rise a little for 10-15 minutes.

Don't expect it to rise like normal dough, but it will puff a little.

Dust another clean work surface and rolling pin with flour, then divide the dough into 8 equal pieces. Using your hands, pat and flatten out the dough, then use the rolling pin to roll each piece into a disc roughly 20cm in diameter and 2-3mm thick.

Warm a frying pan or griddle that's a bit larger than your flatbreads over a medium heat.

Once your pan is nicely hot, cook each flatbread for 1-2 minutes on each side, until nicely puffed up and golden in places, turning it with tongs. Stack together in a clean tea-towel and cover until you serve.



Watch **Caroline Taylor** demo her recipes at the Kleenheat Kitchen on Thursday 29 April.



BBQ chicken thighs & zucchini

Serves 4

Ingredients

8 Mount Barker, free range, chicken thighs, skin on
Sprig of rosemary, stripped and chopped
1 lemon, zested
Pepper

Trifolata

Big splosh of olive oil
1 garlic clove, sliced
2 zucchini, rough chopped
Salt and pepper
A few sprigs of mint, stripped and torn

Zucchini salad

1 zucchini, sliced thin
Big splosh of olive oil
Juice of zested lemon
Salt and pepper
A few sprigs of mint, stripped and torn

Watch **Guy Jeffreys** demo his recipes at the Kleenheat Kitchen on Saturday 1 May.



Method

Marinate chicken thighs overnight in rosemary, lemon zest, splash of olive oil and pepper.

To make trifolata heat a saucepan, add olive oil and garlic to fry for a few seconds then add zucchini chunks and season. Cook on high heat and stir frequently to avoid sticking. After about 30min you should have a nice mush, add 100ml of water and boil for a further few minutes. Take of heat and add mint.

To make zucchini salad toss all ingredients in a bowl and leave sit while you BBQ the chicken thighs.

To serve, divide trifolata between 4 plates, place 2 chicken thighs onto each plate and finish with zucchini salad and juices. Open a bottle of Riesling, Fiano or Vermentino to drink with dinner.



Mushrooms & Chianti butter on toast

Serves 4 as an afternoon snack

Ingredients

250g pork fat, minced
Wood chips for smoking
1 clove garlic, minced
1 teaspoon salt
1 pack of mushrooms
4 slices sourdough

Method

To make Chianti butter set up a smoker and render/smoke pork fat for approx. 20min. Strain, put aside crispy bits and chill rendered lard. Once chilled whip in a kitchen aid until soft peaks form. Add garlic, salt and crispy bits

Heat a bbq and a large fry pan. Cook the mushrooms in a tablespoon of chianti butter, bbq the bread to make toast.

To serve spread a generous tablespoon of chianti butter onto toast and top with mushrooms. Open a bottle of Sangiovese and kick back.

Chianti butter will keep in the fridge for weeks and is great with roast potatoes, fish, pork, chicken, just about everything is better with this on it.

Dandaragan Organic Beef

Spicy Meat Torpedoes with bush herbs (chevups)

Serves 6

Ingredients

600gm Dandaragan Organic Beef mince
300gm lamb mince
100gm pork fat, minced or finely diced
20gm salt
1 tsp black pepper
1 cup Italian parsley leaves
5 cloves of garlic, finely chopped

Ingredients (Indigenous Edition)

600gm kangaroo mince
300gm lamb mince
100gm pork fat, minced or finely diced
20gm salt
1 tsp Tucker Bush – pepperberry leaves, ground
1 cup Tucker Bush sea parsley leaves
5 cloves of garlic, finely chopped
A pinch of Tucker Bush dried native thyme

Method

Mix all the ingredients in a bowl, kneading very well and then refrigerate overnight. Next day, prepare your meat by kneading it again and then forming it into little mini skinless sausages to barbecue or panfry to just cooked through. Please don't overcook! Reheat the pita bread, then put some onion and tomato down the middle with the cooked sausages on top. Finish with a teaspoon or two of Ajvar (or a tomato sauce or relish made from bush tomatoes) on top of the sausages before serving wrapped or flat. (For an optional native garnish use Tucker Bush sea celery)

Ajvar- is a red capsicum sauce (relish), if you can't find it at continental stores, fry two red capsicums cut into strips in some EVOO with a little salt and pepper till cooked through- then blitz in a blender with two peeled cloves of garlic and two tablespoons of butter - serve warm –YUM!

To serve

Pita bread rounds
1 spanish onion, thinly sliced
2 tomato, thinly sliced
1 Jar Ajvar (red capsicum condiment)



Dandaragan Organic Beef

Oysterblade Steaks in red wine sauce

Serves 6

Ingredients

6 Butterflied, Dandaragan Organic Beef, oyster blade steaks (1cm thick)
1 medium onion (finely chopped)
2 sprigs of rosemary (finely chopped)
Large pinch of nutmeg
2 cups fresh breadcrumbs
2 tbsp diced Italian parsley
3 tbsp diced green olives (fresh)
½ cup Parmesan cheese grated
1 egg (beaten)
100gms thin fatty salami
1 ½ cups shiraz
1 cup chicken stock
West Australian extra virgin olive oil
West Australian Organic Lake Salt
Freshly cracked black pepper
Seasoned flour

Ingredients (Indigenous Edition)

6 Butterflied, Dandaragan Organic Beef, oyster blade steaks (1cm thick)
1 medium onion (finely chopped)
1 small sprig, Tucker Bush native thyme (finely chopped)
Large pinch of Tucker Bush bush basil
2 cups fresh breadcrumbs
2 tbsp diced Tucker Bush sea parsley
3 tbsp diced green olives (fresh)
½ cup Parmesan cheese grated
1 egg (beaten)
100gms thin fatty salami
1 ½ cups shiraz
1 cup chicken stock
West Australian extra virgin olive oil
Ground roasted saltbush leaves (salt)
Tucker Bush pepperberry leaves, Ground
Seasoned flour

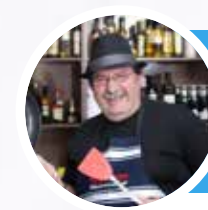
Method

In 50mL of EVOO fry the onion and rosemary (or native thyme) till soft, then off the heat add breadcrumbs, nutmeg (or bush basil), olives, parmesan, parsley (or sea parsley) and egg, mixing with a little salt and pepper (or saltbush and ground pepperberry leaves).

Next tap out each steak with a meat mallet to tenderize and thin out each piece. Divide the stuffing into six even quantities and divide the salami into six even quantities. Spread salami and stuffing over each steak then roll and tie each piece.

To cook, cover the rolls in seasoned flour then fry in a little EVOO in a non-stick fry pan till brown all over. Add the shiraz and with a lid on simmer on a low heat for two minutes and then add the stock and again simmer with the lid on for 20 minutes till juices are tasty. Serve sliced with juices or serve with salad or mash on the side.

If you are creating the Australian edition, you can add a garnish of sliced muntrie berry, which has a clove/nutmeg flavour.



Watch **Vince Garreffa** demo his recipes at the Kleenheat Kitchen on Sunday 2 May.



Our tours include:



Transfers

Courtesy pre and post home/hotel transfers
(Perth/Mandurah metropolitan areas)
A country collection service is also available



Transport



Accommodation



Meals



Attractions



Tour Leaders



Local Guides

Over 55s Touring Specialist

Wander the Wildflowers

Spend Spring exploring Western Australia's world famous wildflower season with Villa's fully escorted tours departing from Perth



Nannup Flower & Garden Festival	5 days	12 – 16 Aug	\$1,345pptw
Kalbarri Wildflowers	5 DAYS	20 – 24 Aug	\$1,695pptw
Mid West Wildflowers	5 DAYS	27 – 31 Aug	\$1,620pptw
West Coast Wildflower Explorer	7 DAYS	4 – 10 Sep	\$2,610pptw
Wildflowers on the Southern Coast	6 DAYS	13 – 18 Sep	\$1,795pptw
Just for Singles West Coast Wildflower Explorer	7 DAYS	18 – 24 Sep	\$3,130pp*
Mid West Wildflowers	5 DAYS	17 – 21 Sep	\$1,620pptw
Cervantes Wildflowers	4 DAYS	24 – 27 Sep	\$1,250pptw
Southern Wildflowers and Wave Rock	5 DAYS	21 – 25 Oct	\$1,735pptw
Hyden and the Wheatbelt Wildflower Trail	4 DAYS	26 – 29 Oct	\$1,365pptw

*guaranteed single room

Browse our full range of WA wildflower tours
www.villa.com.au or call 1800 066 272

Conditions: Tour prices are ex Perth and include home collection (Perth and Mandurah only). Villa tours are escorted, unless otherwise stated and include accommodation, most meals and attractions. Prices are correct at time of printing. Tours are subject to change. Full terms and conditions can be found on villa.com.au.

📞 1800 066 272

✉ travel@villa.com.au

💻 villa.com.au

📘 /VillaCarlottaTravel

📷 @VillaCarlottaTravel

